



JOHSUN®



PRODUCT MANUAL GREEN NEW ENERGY COLLECTION

JOHSUN®



[Http://www.johsuntec.com](http://www.johsuntec.com)



[Http://www.johsun.com](http://www.johsun.com)



QQ:430089203



WECHAT:johsuntec1688



E-CATALOGUE

JOHSUN TEC ELECTRICAL GROUP CO.,LTD.

Address: Johsun Science & Technology Industrial Park,
Liushi Town, Wenzhou, China
Tel: +86-57762711579 62712216 61720889 18858864949
Fax: +86-57762712279 62730890
[Http://www.johsuntec.com](http://www.johsuntec.com) [Http://www.johsun.com](http://www.johsun.com)
<https://zhongxiangtec.1688.com> <https://johsun.1688.com>
Email: johsun_tec@126.com info@johsun.com

DISTRIBUTOR

JOHSUN TEC ELECTRICAL GROUP CO.,LTD.

OUR VISION: THE WORLD KNOWS WHAT WE DO AND TECHNOLOGY CHANGES LIFE;
 OUR MISSION: CHANGING HUMAN LIFE AND PROMOTING SOCIAL HARMONIOUS DEVELOPMENT;
 OUR CORPORATE CULTURE: LISTEN, SMILE, EXPRESS SINCERELY, PRAISE AND THANKSGIVING;
 OUR SPIRIT: TEAMWORK, INNOVATION, KEEP UP WITH THE TIMES, CREATE BRILLIANCE TOGETHER.



JOHSUN WU
 TECHNOLOGY INNOVATION
 JOHSUN CONVOY

ABOUT US

Johsun Tec Electrical Co., Ltd. is one of the successful & modern manufacturer in high and low voltage complete set and components & power supply field. The company was established in year 2005, It specializes in researching, manufacturing and selling high and low voltage complete set and components & Voltage Stabilizer, Voltage Regulator, Transformer, Battery Charger, Switching Power Supply, Dual-Power Automatic Switch Voltage Protector, Inverter, UPS, Battery, Solar Panels etc, Solar System and New energy Series Products etc.

Depending on its advanced global technology and facilities, Johsun Technology is leading the road of international development. So far the company has gained ISO9001:2008 and SGS quality standard certificate, the main products have got CCC, CE and SONCAP certificate.

Up to year 2010, Johsun Technology has established the manufacturing base in Wenzhou and Guangzhou City, and will accomplish a new international industrial zone in Jiangxi Province. In the mean time we have built selling distribution in the main big cities like Beijing, Tianjin, Shanghai, Hangzhou, Yiwu, Hefei, Zhengzhou, Wuhan, Chongqing, Chengdu, Xi'an, Wulumuqi, Lanzhou, Lasa, Guiyang, Nanning, Qingdao, Changsha, Nanchang, Guangzhou and Dongguan etc. Also Johsun's power Electrical products have been sold to more than 100 countries and areas like USA, Canada, Peru, Bolivia, UK, France, Germany, Italy, Russia, Dubai, U.A.E, Saudi Arabia, Lebanon, Iraq, Afghanistan, India, Indonesia, Malaysia, Singapore, Burma, Cambodia, Philippines, Thailand, Bengal, Pakistan, Kazakhstan, Iran, Syria, Israel, Janpan, Korean, korea, Viet Nam, South Africa and Nigeria, Kenya, Tanzania, Zimbabwe, Mozambique, Ethiopia, Benin, Egypt, Australia, New Zealand, Palau, Kiribati, Papua New Guinea, etc.

Offer the reliable power to the whole human being is the business purpose of Johsun Technology. We are steadily going forward to build "Johsun" the famous power brand in the world.

JOHSUN® ENTERPRISE HONOR

For many years,
 The staffs of Johsun are building the perfect quality, with efforts and hard working
 With sincere heart, to gain the trust of customer in the future. New chapter is going
 to open and we will keep on following the dream and ideal.



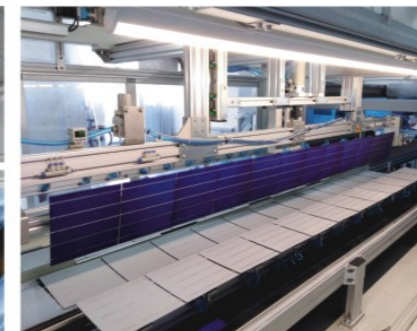
JOHSUN[®]

PRODUCTION SITE



JOHSUN[®]

PRODUCTION TESTING EQUIPMENT



PRODUCT

INVERTER

POWER FREQUENCY INVERTER

| | |
|--|----|
| HYB NEW SERIES HYBRID SOLAR INVER HYBRID CHARGER SOLAR PURE SINE WAVE INVERTER (WITH AC CHARGING AND MPPT SOLAR CHARGE CONTROLLER) | 01 |
| JHSI NEW WALL MOUNT SERIES OFF-GRID SOLAR POWER PURE SINE WAVE INVERTER (WITH AC CHARGING AND PWM SOLAR CHARGE CONTROLLER) | 02 |
| JHI NEW WALL MOUNT SERIES PURE SINE WAVE INVERTER (WITH AC CHARGING AND WITHOUT SOLAR CHARGE CONTROLLER) | 03 |
| JFPI WALL MOUNT SERIES HYBRID CHARGER SOLAR PURE SINE WAVE INVERTER (WITH AC CHARGING AND PWM SOLAR CHARGE CONTROLLER) | 04 |
| JFOI WALL MOUNT SERIES HYBRID CHARGER SOLAR PURE SINE WAVE INVERTER (WITH AC CHARGING AND MPPT SOLAR CHARGE CONTROLLER) | 05 |
| JFI WALL MOUNT SERIES PURE SINE WAVE INVERTER (WITH AC CHARGING AND WITHOUT SOLAR CHARGE CONTROLLER) | 06 |
| JLI TABLE TYPE SERIES 350W-3000W PURE SINE WAVE INVERTER (WITH AC CHARGING AND WITHOUT SOLAR CHARGE CONTROLLER) | 07 |
| JLVI CABINET TYPE SERIES 5000W-30000W PURE SINE WAVE INVERTER (WITH AC CHARGING AND WITHOUT SOLAR CHARGE CONTROLLER) | 08 |
| JLSI TABLE TYPE SERIES 350W-3000W OFF-GRID SOLAR POWER INVERTER (WITH AC CHARGING AND PWM SOLAR CHARGE CONTROLLER) | 09 |
| JLSVI CABINET TYPE SERIES 5000W-30KW OFF-GRID SOLAR POWER INVERTER (WITH AC CHARGING AND MPPT SOLAR CHARGE CONTROLLER) | 10 |
| JGI NEW WALL MOUNT SERIES PURE SINE WAVE INVERTER (WITH AC CHARGING AND WITHOUT SOLAR CHARGE CONTROLLER) | 11 |
| JGI NEW WALL MOUNT SERIES PURE SINE WAVE INVERTER (WITH AC CHARGING AND MPPT SOLAR CHARGE CONTROLLER) | 12 |
| AFRICAN POWER FREQUENCY INVERTER MODIFID SINE WAVE DC12V TO AC220-240V S/SI-150-500 SERIES | 13 |

HIGH FREQUENCY INVERTER

| | |
|---|-------|
| HIGH FREQUENCY PURE SINE WAVE INVERTER JPS WALL MOUNT SERIES SOLAR INVERTER (WITH PWM SOLAR CHARGE CONTROLLER) | 14-15 |
| HIGH FREQUENCY PURE SINE WAVE INVERTER JMPS WALL MOUNT SERIES SOLAR INVERTER (WITH MPPT SOLAR CHARGE CONTROLLER) | 16-17 |
| HIGH FREQUENCY PURE SINE WAVE INVERTER JPS PLUS WALL MOUNT SERIES SOLAR INVERTER (WITH PWM SOLAR CHARGE CONTROLLER) | 18-19 |
| HIGH FREQUENCY PURE SINE WAVE INVERTER JMPS PLUS WALL MOUNT SERIES SOLAR INVERTER (WITH MPPT SOLAR CHARGE CONTROLLER) | 20-21 |
| HIGH FREQUENCY PURE SINE WAVE INVERTER JMPS-V PLUS WALL MOUNT SERIES ALL IN ONE SOLAR INVERTER (WITH HEAVY CURRENT MPPT SOLAR CHARGE CONTROLLER) | 22-23 |
| JP-E/D SERIES HIGH FREQUENCY CAR PURE SINE WAVE INVERTER | 24-25 |
| TX-100-300 HIGH-FREQUENCY CAR MODIFIED SINE WAVE INVERTER (WITH USB CHARGING PORT) | 26 |
| TX-400-800 HIGH-FREQUENCY CAR MODIFIED SINE WAVE INVERTER (WITHOUT USB CHARGING PORT) | 27 |
| TX-1000-3000 HIGH-FREQUENCY CAR MODIFIED SINE WAVE INVERTER (WITHOUT USB CHARGING PORT) | 28 |

CATALOGUE

UPS UNINTERRUPTIBLE POWER SUPPLY

| | |
|---|----|
| SINGLE PHASE WITH GROUND ON-LINE HIGH FREQUENCY UPS(1P-1K-10K) | 29 |
| 3 PHASES WITH NEUTRAL WIRE AND GROUND ON-LINE HIGH FREQUENCY UPS(3P-10K-40K) | 30 |
| 3 PHASES WITH NEUTRAL WIRE AND GROUND ON-LINE LOW FREQUENCY UPS(3P-10K-200K) | 31 |
| JSI SERIES 650W-3000W BACKUP TYPE UPS OFF-LINE UPS COMPUTER SPECIAL USE (SIMULATED SINE WAVE WITH LCD DISPLAY) | 32 |
| JLI SERIES 500W-3000W BACKUP TYPE UPS OFF-LINE UPS COMPUTER SPECIAL USE (SIMULATED SINE WAVE) | 33 |
| D SERIES LINE INTERACTIVE UPS (500VA-3000VA) | 34 |
| S SERIES LINE INTERACTIVE UPS (500VA-3000VA) | 35 |
| AB, AU, AH SERIES LINE INTERACTIVE UPS (500VA-3000VA) | 36 |
| AL LONG-RUN TIME SERIES LINE INTERACTIVE UPS (500VA/1000VA/2000VA)(DC12V/24V) | 37 |

SOLAR SERIES

| | |
|--|-------|
| SOLAR PHOTOVOLTAIC MODULES | 38 |
| MONO CRYSTAL SOLAR PHOTOVOLTAIC MODULES | 39-40 |
| POLY CRYSTAL SOLAR PHOTOVOLTAIC MODULES | 41-42 |
| REFERENCE ON-GRID SOLAR POWER SYSTEM PROJECTIONS | 43-44 |
| SOLAR STREET LIGHT | 45-48 |
| SOLAR ENERGY SYSTEM | 49-50 |
| ON-GRID SOLAR POWER SYSTEM | 51 |
| OFF-GRID SOLAR POWER SYSTEM | 52 |
| MINI PORTABLE SOLAR POWER SYSTEM | 53 |
| INTEGRATED OFF-GRID SOLAR POWER SYSTEM | 54 |
| MINI HOME SOLAR POWER SYSTEM | 55-58 |
| SOLAR FLOOD LIGHT SYSTEM | 59-60 |

LEAD-ACID BATTERIES

| | |
|--|----|
| JS SERIES VALVE REGULATED SEALED LEAD-ACID BATTERY | 61 |
| JSG SERIES DEEP CYCLE GEL BATTERY | 62 |

SOLAR CONTROLLER

| | |
|------------------------------|----|
| MPPT SOLAR CHARGE CONTROLLER | 63 |
|------------------------------|----|

FITTING SERIES

| | |
|----------------------------|----|
| POWER SOCKET & PLUG SERIES | 64 |
|----------------------------|----|



Products Description

Product Name : HYB Series Hybrid Charger Solar inverter 1000W-6000W
 Model No.:HYB-1000/1500/2000/3000/4000/5000/6000
 Classification:Off-grid Charger Solar Inverter/Low frequency pure sine wave inverter
 Introduction: Based on transformer technology,strong loading capacity.
 Used for all kinds of home/office equipments,solar power system

Technical Parameter Table

- 1.64-bits DSP Intelligent control chipset.
- 2.LED and LCD display with multi-function,Real-time display of dynamic values.
- 3.Built-in MPPT solar charging controller, maximize the solar energy.
- 4.Built-in automatic AC charger and automatic AC mains switcher. Switch time ≤5ms.
- 5.High Transfer efficiency is above 90%.
- 6.Continuous stable pure sine wave output with built-in AVR stablizer.
- 7.3 times surge power,excellent loading capability.

Technical parameters

| Model No | | HYB-1000 | HYB-1500 | HYB-2000 | HYB-3000 | HYB-4000 | HYB-5000 | HYB-6000 | |
|---|------------------------------------|--|-------------|-----------------|-------------------------------|---------------------------------|----------|----------|--|
| Capacity | Rated power | 1KW | 1.5KW | 2KW | 3KW | 4KW | 5KW | 6KW | |
| | Peak power | 3KW | 3.5KW | 6KW | 9KW | 12KW | 15KW | 18KW | |
| Input | Standard battery voltage | 12VDC | 12/24/48VDC | | | 24/48/96VDC | | | |
| | AC input voltage range | 175-275VAC | | | | | | | |
| | AC input frequency | 50Hz: 40-60Hz | | | 60Hz: 55-65H | | | | |
| Output | Conversion efficiency | ≥90% | | | | | | | |
| | Output voltage | 220VAC ±3%(battery model) | | | | | | | |
| | Output frequency | 50/60Hz ± 0.5Hz(battery model) | | | | Automatic tracking (mains mode) | | | |
| | Output wave form | Pure sine wave | | | | | | | |
| Other | Protect | With over-voltage, overload, low-voltage, high-temperature and short-circuit protection | | | | | | | |
| | Display | LCD and LED display | | | | | | | |
| | Cooling way | Intelligent speed control air cooling | | | | | | | |
| | Communication | RS-232/USB/SNMP(optional) | | | | | | | |
| AC charging | AC charge voltage | 13.6-14.2VDC(12V)/27.2-28.4VDC(24V)/54.4-56.8VDC(48V) | | | | | | | |
| | AC charge current | The charging current of 0-35a is adjustable | | | | | | | |
| Working mode (optional) | 01 | AC priority mode | | | | | | | |
| | 02 | Energy saving mode | | | | | | | |
| | 03 | Battery priority mode | | | | | | | |
| Technical parameters of MPPT solar controller | Charge current & discharge current | 30A-50A (optional) | | | 30A-60A(optional) | | | | |
| | Max solar input power | 420W (12V) / 840W (24V) | | | 1400W (24V) / 2800W (48V) | | | | |
| | MPPT input voltage range | 18-60VDC(12V)/30-100VDC(24V) | | | 30-100VDC(24V)/60-150VDC(48V) | | | | |
| | Temperature compensation | 4mv/°C | | | | | | | |
| | Charging mode | MPPT intelligent charging | | | | | | | |
| | Protect | It has over charge, over discharge, overload, short circuit and solar reverse protection | | | | | | | |
| The work environment | Temperature | 0-50°C | | | | | | | |
| | Humidity | <95%(No dew) | | | | | | | |
| Physical | Dimention,D x W x H(mm) | 410 x 282 x 150 | | 460 x 332 x 150 | | 490 x 332 x 170 | | | |
| Packing | Quantity Per Carton | 1 set per carton | | | | | | | |

Product models and specifications are subject to change without prior notice.



Products Description

Product Name : JHSI Hybrid charger solar inverter 350W-1200W
 Model No.:JHSI-350/500/600/800/1000/1200
 Classification:Off-grid Solar Power Inverter/Pure sine wave inverter
 Introduction: Based on transformer technology,strong loading capacity.

Technical Parameter Table

- 1.64-bits DSP Intelligent control chipset.
- 2.LED and LCD display with multi-function,Real-time display of dynamic values.
- 3.Built-in PWM solar charging controller, maximize the solar energy.
- 4.Built-in automatic AC charger and automatic AC mains switcher. Switch time ≤8ms.
- 5.High Transfer efficiency is above 92%.
- 6.Continuous stable pure sine wave output with built-in AVR stablizer.
- 7.3 times surge power,excellent loading capability.

Technical parameters

| Model No | | JHSI-350 | JHSI-500 | JHSI-600 | JHSI-800 | JHSI-1000 | JHSI-1200 | |
|--|------------------------------------|---|----------|----------|------------------------------|-----------|-----------|--|
| Capacity | Rated power | 350W | 500W | 600W | 800W | 1KW | 1.2KW | |
| | Peak power | 1050W | 1500W | 1800W | 2400W | 3KW | 3.6KW | |
| Input | Standard battery voltage | 12VDC | | | 12/24VDC | | | |
| | AC input voltage range | 140-275VAC | | | | | | |
| | AC input frequency | 50Hz: 45-65Hz | | | 60Hz: 55-65Hz | | | |
| Output | Conversion efficiency | ≥92% | | | | | | |
| | Output voltage | 220VAC ±2%(The battery model) ±5%(The utility model) | | | | | | |
| | Output frequency | 50/60Hz ± 0.3Hz(The battery model) | | | Automatic tracking (AC mode) | | | |
| | Output wave form | Pure sine wave | | | | | | |
| Other | Protect | With over-voltage, overload, low-voltage, high-temperature and short-circuit protection | | | | | | |
| | Display | LCD and LED display | | | | | | |
| | Cooling way | Intelligent speed control air cooling | | | | | | |
| | Communication | RS-232/USB/SNMP(optional) | | | | | | |
| AC charging | AC charge voltage | 13.6-14.2VDC(12V)/27.2-28.4VDC(24V) | | | | | | |
| | AC charge current | The charging current of 0-20A is adjustable | | | | | | |
| Working mode (optional) | 01 | AC priority mode | | | | | | |
| | 02 | Energy saving mode | | | | | | |
| | 03 | Battery priority mode | | | | | | |
| Technical parameters of PWM solar controller | Charge current & discharge current | 20A-30A(optional) | | | | | | |
| | Max solar input power | 30V(12V) / 60V (24V) | | | | | | |
| | PWM input voltage range | 12V / 24V | | | | | | |
| | Temperature compensation | -3mv/°C | | | | | | |
| | Charging mode | PWM | | | | | | |
| | Protect | Over voltage, low voltage, overload, short circuit and solar reverse protection | | | | | | |
| The work environment | Temperature | 0-50°C | | | | | | |
| | Humidity | <95%(There is no Ion) | | | | | | |
| Physical | Dimention,D x W x H(mm) | 280 x 275 x 120 | | | | | | |
| Packing | Dimention,L x W x H(mm) | 345 x 315 x 187mm | | | | | | |
| | Quantity Per Carton | 1 set per carton | | | | | | |

Product models and specifications are subject to change without prior notice.



Products Description

Product Name : Low frequency Inverter JHI-350W-1200W
 Model No.:JHI-350/500/600/800/1000/1200
 Classification: Low frequency Inverter/PWM solar inverter
 Introduction: Based on transformer technology, strong loading capacity.
 Used for all kinds of home/office equipments, solar power system

Technical Parameter Table

- 1.64-bits DSP Intelligent control chipset.
- 2.LED and LCD display with multi-function,Real-time display of dynamic values.
- 3.Built-in automatic AC charger and automatic AC mains switcher. Switch time ≤8ms.
- 4.High Transfer efficiency is above 87%.
- 5.Continuous stable pure sine wave output with built-in AVR stablizer.
- 6.3 times surge power,excellent loading capability.

Technical parameters

| Model No | | JHI-350 | JHI-500 | JHI-1000 | JHI-1500 | JHI-2000 | JHI-3000 |
|-------------------------|--------------------------|---|---------|----------|---|----------|----------|
| Capacity | Rated power | 350W | 500W | 1KW | 1.5KW | 2.0KW | 3.0KW |
| | Peak power | 1050W | 1500W | 3KW | 4.5KW | 6.0KW | 9.0KW |
| Input | Standard battery voltage | 12VDC | | | 12/24VDC | | |
| | AC input voltage range | 140-275VAC | | | | | |
| | AC input frequency | 50Hz: 45-65Hz 60Hz: 55-65Hz | | | | | |
| Output | Conversion efficiency | ≥87% | | | | | |
| | Output voltage | 220VAC ±2%(battery mode) ±5%(The utility mode) | | | | | |
| | Output frequency | 50/60Hz ± 0.3Hz(battery model) Automatic tracking(The utility mode) | | | | | |
| | Output waveform | Pure sine wave | | | | | |
| Other | Protect | With over-voltage, overload, low-voltage, high-temperature and short-circuit protection | | | | | |
| | Display | LCD and LED display | | | | | |
| | Cooling way | Intelligent speed control air cooling | | | | | |
| | Communication | RS-232/USB/SNMP(optional) | | | | | |
| AC charging | AC charging voltage | 13.6-14.2VDC(12V)/27.2-28.4VDC(24V)/54.4-56.8VDC(48V) | | | | | |
| | AC charge current | The charging current of 0-20A is adjustable | | | The charging current of 0-35A is adjustable | | |
| Working mode (optional) | 01 | AC priority mode | | | | | |
| | 02 | Energy saving mode | | | | | |
| | 03 | Battery priority mode | | | | | |
| Work environment | Temperature | 0-50°C | | | | | |
| | Humidity | <95%(No dew) | | | | | |
| Physical | Dimention,L x W x H(mm) | 280 x 275 x 120 | | | | | |
| Packing | Dimention,L x W x H(mm) | 345 x 315 x 187 | | | | | |
| | Quantity Per Carton | 1 set per carton | | | | | |

Product models and specifications are subject to change without prior notice.



Products Description

Product Name : JFPI Series Hybrid Charger Solar inverter 1000W-6000W
 Model No.:JFPI-1000/1500/2000/3000/4000/5000/6000
 Classification:Off-grid Charger Solar Inverter/Low frequency pure sine wave inverter
 Introduction: Based on transformer technology, strong loading capacity.
 Used for all kinds of home/office equipments, solar power system

Technical Parameter Table

- 1.64-bits DSP Intelligent control chipset.
- 2.LED and LCD display with multi-function,Real-time display of dynamic values.
- 3.Built-in PWM solar charging controller, maximize the solar energy.
- 4.Built-in automatic AC charger and automatic AC mains switcher. Switch time ≤5ms.
- 5.High Transfer efficiency is above 90%.
- 6.Continuous stable pure sine wave output with built-in AVR stablizer.
- 7.3 times surge power,excellent loading capability.

Technical parameters

| Model No | | JFPI-1000 | JFPI-1500 | JFPI-2000 | JFPI-3000 | JFPI-4000 | JFPI-5000 | JFPI-6000 |
|--|-----------------------------------|--|-----------|-----------|-------------------|-------------|-----------|-----------|
| Capacity | Rated power | 1KW | 1.5KW | 2KW | 3KW | 4KW | 5KW | 6KW |
| | Peak power | 3KW | 3.5KW | 6KW | 9KW | 12KW | 15KW | 18KW |
| Input | Standard battery voltage | 12VDC | 12/24 VDC | | | 24/48/96VDC | | |
| | AC input voltage range | 175-275VAC | | | | | | |
| | AC input frequency | 50Hz: 40-60Hz 60Hz: 55-65H | | | | | | |
| Output | Conversion efficiency | ≥90% | | | | | | |
| | Output voltage | 220VAC ±3%(battery model) | | | | | | |
| | Output frequency | 50/60Hz ± 0.5Hz(battery model) Automatic tracking (mains mode) | | | | | | |
| | Output wave form | Pure sine wave | | | | | | |
| Other | Protect | With over-voltage, overload, low-voltage, high-temperature and short-circuit protection | | | | | | |
| | Display | LCD and LED display | | | | | | |
| | Cooling way | Intelligent speed control air cooling | | | | | | |
| | Communication | RS-232/USB/SNMP(optional) | | | | | | |
| AC charging | AC charge voltage | 13.6-14.2VDC(12V)/27.2-28.4VDC(24V)/54.4-56.8VDC(48V) | | | | | | |
| | AC charge current | The charging current of 0-35a is adjustable | | | | | | |
| Working mode (optional) | 01 | AC priority mode | | | | | | |
| | 02 | Energy saving mode | | | | | | |
| | 03 | Battery priority mode | | | | | | |
| Technical parameters of PWM solar controller | Charge current& discharge current | 20A -50A (optional) | | | 30A-60A(optional) | | | |
| | Max solar input power | 30V (12V) / 60V (24V)/120V(48V) | | | | | | |
| | PWMinput voltage range | 12V/24V/48V | | | | | | |
| | Temperature compensation | 4mv/°C | | | | | | |
| | Charging mode | PWM intelligent charging | | | | | | |
| The work environment | Protect | It has over charge, over discharge, overload, short circuit and solar reverse protection | | | | | | |
| | Temperature | 0-50°C | | | | | | |
| Physical | Humidity | <95%(No dew) | | | | | | |
| | Dimention,D x W x H(mm) | 460 x 245 x 200 | | | 630 x 280 x 200 | | | |
| Packing | Dimention,L x W x H(mm) | 530 x 355 x 255 | | | 740 x 355 x 275 | | | |
| | Quantity Per Carton | 1 set per carton | | | | | | |

Product models and specifications are subject to change without prior notice.



Products Description

Product Name : JFOI Series Hybrid Charger Solar inverter 1000W-6000W
 Model No.:JFOI-1000/1500/2000/3000/4000/5000/6000
 Classification:Off-grid Charger Solar Inverter/Low frequency pure sine wave inverter
 Introduction: Based on transformer technology,strong loading capacity.
 Used for all kinds of home/office equipments,solar power system

Technical Parameter Table

- 1.64-bits DSP Intelligent control chipset.
- 2.LED and LCD display with multi-function,Real-time display of dynamic values.
- 3.Built-in MPPT solar charging controller, maximize the solar energy.
- 4.Built-in automatic AC charger and automatic AC mains switcher. Switch time ≤5ms.
- 5.High Transfer efficiency is above 90%.
- 6.Continuous stable pure sine wave output with built-in AVR stablizer.
- 7.3 times surge power,excellent loading capability.

Technical parameters

| Model No | | JFOI-1000 | JFOI-1500 | JFOI-2000 | JFOI-3000 | JFOI-4000 | JFOI-5000 | JFOI-6000 |
|---|------------------------------------|--|-----------|-----------|---------------------------------|-------------|-----------|-----------|
| Capacity | Rated power | 1KW | 1.5KW | 2KW | 3KW | 4KW | 5KW | 6KW |
| | Peak power | 3KW | 3.5KW | 6KW | 9KW | 12KW | 15KW | 18KW |
| Input | Standard battery voltage | 12VDC | 12/24 VDC | | | 24/48/96VDC | | |
| | AC input voltage range | 175-275VAC | | | | | | |
| | AC input frequency | 50Hz: 40-60Hz | | | 60Hz: 55-65H | | | |
| Output | Conversion efficiency | ≥90% | | | | | | |
| | Output voltage | 220VAC ± 3%(battery model) | | | | | | |
| | Output frequency | 50/60Hz ± 0.5Hz(battery model) | | | Automatic tracking (mains mode) | | | |
| | Output wave form | Pure sine wave | | | | | | |
| Other | Protect | With over-voltage, overload, low-voltage, high-temperature and short-circuit protection | | | | | | |
| | Display | LCD and LED display | | | | | | |
| | Cooling way | Intelligent speed control air cooling | | | | | | |
| | Communication | RS-232/USB/SNMP(optional) | | | | | | |
| AC charging | AC charge voltage | 13.6-14.2VDC(12V)/27.2-28.4VDC(24V)/54.4-56.8VDC(48V) | | | | | | |
| | AC charge current | The charging current of 0-35a is adjustable | | | | | | |
| Working mode (optional) | 01 | AC priority mode | | | | | | |
| | 02 | Energy saving mode | | | | | | |
| | 03 | Battery priority mode | | | | | | |
| Technical parameters of MPPT solar controller | Charge current & discharge current | 30A -50A (optional) | | | 30A-60A(optional) | | | |
| | Max solar input power | 420W (12V) / 840W (24V) | | | 1400W (24V) / 2800W (48V) | | | |
| | MPPT input voltage range | 18-60VDC(12V)/30-100VDC(24V) | | | 30-100VDC(24V)/60-150VDC(48V) | | | |
| | Temperature compensation | 4mv/°C | | | | | | |
| | Charging mode | MPPT intelligent charging | | | | | | |
| The work environment | Protect | It has over charge, over discharge, overload, short circuit and solar reverse protection | | | | | | |
| Physical | Temperature | 0-50°C | | | | | | |
| | Humidity | <95%(No dew) | | | | | | |
| Packing | Dimention,D x W x H(mm) | 460 x 245 x 200 | | | 630 x 280 x 200 | | | |
| | Quantity Per Carton | 530 x 355 x 255 | | | 740 x 355 x 275 | | | |
| | | 1 set per carton | | | | | | |

Product models and specifications are subject to change without prior notice.



Products Description

Product Name: Low frequency Inverter JFI1000W-6000W
 Model No :JFI-1000/1500/2000/3000/4000/5000/6000
 Classification: Low frequency Inverter/Off grid solar inverter
 Introduction: Based on transformer technology,strong loading capacity.
 Used for all kinds of home/office equipments,solar power system

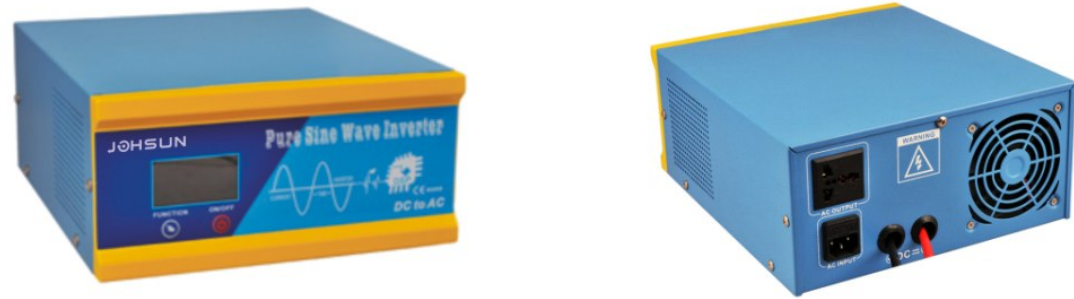
Technical Parameter Table

- 1.64-bits DSP Intelligent control chipset.
- 2.LED and LCD display with multi-function,Real-time display of dynamic values.
- 3.Built-in automatic AC charger and automatic AC switcher. Switch time ≤5ms.
- 4.Continuous stable pure sine wave output with built-in AVR stablizer.
- 5.3 times peak power,excellent loading capability.
- 6.High Transfer efficiency is above 90%.

Technical parameters

| Model No | | JFI-1000 | JFI-1500 | JFI-2000 | JFI-3000 | JFI-4000 | JFI-5000 | JFI-6000 |
|-------------------------|--------------------------|---|----------|-----------|--------------------------------------|----------|----------|----------|
| Capacity | Rated power | 1KW | 1.5KW | 2KW | 3KW | 4KW | 5KW | 6KW |
| | Peak power | 3KW | 3.5KW | 6KW | 9KW | 12KW | 15KW | 18KW |
| Input | Standard battery voltage | 12/24VDC | | 12/24 VDC | | 24/48VDC | | |
| | AC input voltage range | 175-275VAC | | | | | | |
| | AC input frequency | 50Hz: 40-60Hz | | | 60Hz: 55-65H | | | |
| Output | Conversion efficiency | ≥90% | | | | | | |
| | Output voltage | 220VAC ± 3%(battery mode) | | | | | | |
| | Output frequency | 50/60Hz ± 0.5Hz(battery mode) | | | Automatic tracking(The utility mode) | | | |
| | Output wave form | Pure sine wave | | | | | | |
| Other | Protect | With over-voltage, overload, low-voltage, high-temperature and short-circuit protection | | | | | | |
| | Display | LCD and LED display | | | | | | |
| | Cooling way | Intelligent speed control air cooling | | | | | | |
| | Communication | RS-232/USB/SNMP(optional) | | | | | | |
| AC charging | AC charging voltage | 13.6-14.2VDC(12V)/27.2-28.4VDC(24V)/54.4-56.8VDC(48V) | | | | | | |
| | AC charge current | The charging current of 0-35a is adjustable | | | | | | |
| Working mode (optional) | 01 | AC priority mode | | | | | | |
| | 02 | Energy saving mode | | | | | | |
| | 03 | Battery priority mode | | | | | | |
| Work Environment | Temperature | 0-50°C | | | | | | |
| | Humidity | <95%(No dew) | | | | | | |
| Physical | Dimention,L x W x H(mm) | 460 x 245 x 200 | | | 630 x 280 x 200 | | | |
| | Quantity Per Carton | 530 x 355 x 255 | | | 740 x 355 x 275 | | | |
| | | 1 set per carton | | | | | | |

Product models and specifications are subject to change without prior notice.



Products Description

Product Name : Low frequency Inverter JLI-350-3000W
 Model No: JLI-350/500//1000/1500/2000//3000
 Classification: Low frequency Inverter/Off grid power inverter
 Introduction: All kinds of home appliance,office equipment,
 solar power system,and other equipments which use single phase power

Technical Parameter Table

- 1.Digital CPU intelligent control, intelligent charging.
- 2.With short circuit, high and low voltage, over temperature, overload protection functions.
- 3.Pure sine wave output , suitable for all kinds of loads.
- 4.Shock resistant, with super load capacity .
- 5.Low power consumption ,high efficiency

Technical parameters

| Model No | | JLI-350 | JLI-500 | JLI-1000 | JLI-1500 | JLI-2000 | JLI-3000 | |
|-------------------------|--------------------------|--|-------------------|----------------------------|---|-----------------|----------|--|
| Capacity | Rated power | 350W | 500W | 1KW | 1.5KW | 2KW | 3KW | |
| | Peak power | 700W | 1000W | 2KW | 3KW | 4KW | 6KW | |
| Input | Standard battery voltage | 12/24VDC | | | | | 24/48VDC | |
| | AC input voltage range | 140-275VAC | | | | 170VAC-275VAC | | |
| | AC input frequency | 50Hz: 45-65Hz | | 60Hz: 55-65Hz ± 0.5Hz AUTO | | | | |
| Output | Conversion efficiency | ≥85% | | | | | | |
| | Output voltage | 220VAC ± 2%(battery model) ± 5%(The utility model) | | | | | | |
| | Output frequency | 50/60Hz ± 0.3Hz(battery model) Automatic tracking(The utility model) | | | | | | |
| | Output waveform | Pure sine wave | | | | | | |
| Other | Protect | over-voltage, overload, low-voltage, high-temperature and short-circuit protection | | | | | | |
| | Display | LCD and LED display | | | | | | |
| | Cooling way | Intelligent speed control air cooling | | | | | | |
| | Communication | RS-232/USB/SNMP(optional) | | | | | | |
| AC charging | AC charging voltage | 13.6-14.2VDC(12V) | 27.2-28.4VDC(24V) | 54.4-56.8VDC(48V) | | | | |
| | AC charge current | The charging current of 0-20A is adjustable | | | The charging current of 0-35A is adjustable | | | |
| Working mode (optional) | 01 | AC priority mode | | | | | | |
| | 02 | Energy saving mode | | | | | | |
| | 03 | Battery priority mode | | | | | | |
| Work environment | Temperature | 0-50℃ | | | | | | |
| | Humidity | <95%(No dew.) | | | | | | |
| Physical | Dimention,L x W x H(mm) | 285 x 255 x 120 | | 310 x 185 x 300 | | 410 x 225 x 410 | | |
| Packing | Dimention,L x W x H(mm) | 345 x 315 x 187 | | 380 x 245 x 370 | | 552 x 363 x 694 | | |

Product models and specifications are subject to change without prior notice.



Products Description

Product Name : Low frequency Inverter JLVI-350-3000W
 Model No: JLVI-350/500//1000/1500/2000//3000
 Classification: Low frequency Inverter/Off grid power inverter
 Introduction: All kinds of home appliance,office equipment,
 solar power system,and other equipments which use single phase power

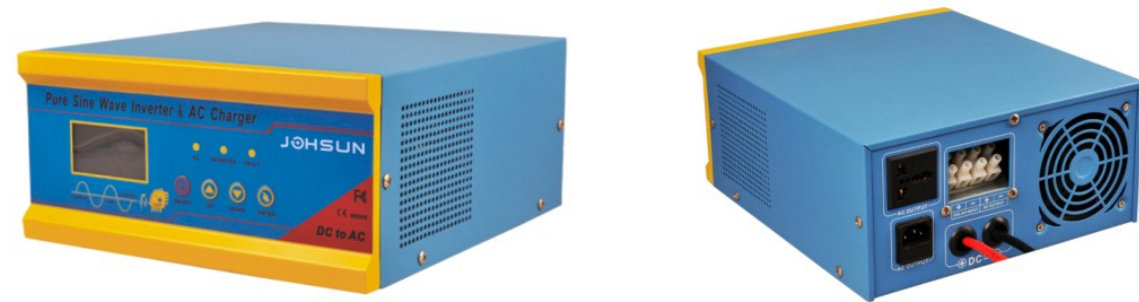
Technical Parameter Table

- 1.Digital CPU intelligent control, intelligent charging.
- 2.With short circuit, high and low voltage, over temperature, overload protection functions.
- 3.Pure sine wave output , suitable for all kinds of loads.
- 4.Shock resistant, with super load capacity .
- 5.Low power consumption ,high efficiency

Technical parameters

| Model No | | JLVI-5000 | JLVI-7000 | JLVI-10000 | JLVI-15000 | JLVI-20000 | JLVI-30000 |
|-------------------------|--------------------------|--|-------------------|----------------------------|-----------------|------------|------------|
| Capacity | Rated power | 5KW | 7KW | 10KW | 15KW | 20KW | 30KW |
| | Peak power | 10KW | 14KW | 20KW | 30KW | 40KW | 60KW |
| Input | Standard battery voltage | 48/96VDC | | 96/192/240VDC | | 240/360VDC | |
| | AC input voltage range | 170-250VAC | | | | | |
| | AC input frequency | 50Hz: 45-65Hz | | 60Hz: 55-65Hz ± 0.5Hz AUTO | | | |
| Output | Conversion efficiency | ≥85% | | | | | |
| | Output voltage | 220VAC ± 2%(battery model) ± 5%(The utility model) | | | | | |
| | Output frequency | 50/60Hz ± 0.3Hz(battery model) Automatic tracking(The utility model) | | | | | |
| | Output waveform | Pure sine wave | | | | | |
| Other | Protect | over-voltage, overload, low-voltage, high-temperature and short-circuit protection | | | | | |
| | Display | LCD and LED display | | | | | |
| | Cooling way | Intelligent speed control air cooling | | | | | |
| | Communication | RS-232/USB/SNMP(optional) | | | | | |
| AC charging | AC charging voltage | 13.6-14.2VDC(12V) | 27.2-28.4VDC(24V) | 54.4-56.8VDC(48V) | | | |
| | AC charge current | The charging current of 0-35A is adjustable | | | | | |
| Working mode (optional) | 01 | AC priority mode | | | | | |
| | 02 | Energy saving mode | | | | | |
| | 03 | Battery priority mode | | | | | |
| Work environment | Temperature | 0-50℃ | | | | | |
| | Humidity | <95%(No dew.) | | | | | |
| Physical | Dimention,L x W x H(mm) | 485 x 300 x 655 | 540 x 300 x 665 | 580 x 290 x 675 | 690 x 360 x 870 | | |
| Packing | Dimention,L x W x H(mm) | 623 x 385 x 709 | 650 x 385 x 720 | 690 x 360 x 830 | 760 x 430x 830 | | |

Product models and specifications are subject to change without prior notice.



Products Description

Product Name : JLSI Hybrid solar inverter 5000W-30000W.
 Model No.:JLSI-5000/7000/10000/15000/20000/30000.
 Classification: Off-grid Solar Power Inverter/Low frequency inverter.
 Introduction: All kinds of home appliance,office equipment. solar power system,and other equipments which use single phase power

Technical Parameter Table

- 1.Digital CPU intelligent control, intelligent charging.
- 2.Built in PWM solar charge controller .
- 3.Built-in PWM solar charging controller, maximize the solar energy.
- 4.With short circuit, high and low voltage, over temperature, overload protection functions.
- 5.Pure sine wave output , suitable for all kinds of loads.
- 6.Shock resistant, with super load capacity .
- 7.Low power consumption ,high efficiency.

Technical parameters

| Model No | | JLSI-350 | JLSI-500 | JLSI-1000 | JLSI-1500 | JLSI-2000 | JLSI-3000 | |
|---------------------------------|--------------------------|---|-----------------|-----------------|---|-----------|-----------|--|
| Capacity | Rated power | 350W | 500W | 1KW | 1.5KW | 2KW | 3KW | |
| | Peak power | 700W | 1000W | 2KW | 3KW | 4KW | 6KW | |
| Input | Standard battery voltage | 12/24VDC | | | | | 24/48VDC | |
| | AC input voltage range | 170-250VAC | | | | | | |
| | AC input frequency | 50Hz: 40-60Hz 60Hz: 45-65Hz | | | | | | |
| Output | Conversion efficiency | ≥90% | | | | | | |
| | Output voltage | 220VAC ±2%(The battery mode) ±5%(The utility mode) | | | | | | |
| | Output frequency | 50/60Hz ± 0.3Hz(The battery mode) Automatic tracking (AC mode) | | | | | | |
| | Output wave form | Pure sine wave | | | | | | |
| Other | Protect | With over - voltage, overload, low - voltage, high - temperature and short - circuit protection | | | | | | |
| | Display | LCD and LED display | | | | | | |
| | Cooling way | Intelligent speed control air cooling | | | | | | |
| | Communication | RS-232/USB/SNMP(optional) | | | | | | |
| AC charging | AC charging voltage | 27.2-28.4VDC(24V)/54.4-56.8VDC(48V)/108.8-113.6VDC(96V)/217.6-227.2VDC(192V) | | | | | | |
| | AC charging current | The charging current of 0-20A is adjustable | | | The charging current of 0-35A is adjustable | | | |
| Working mode (optional) | 01 | AC priority mode | | | | | | |
| | 02 | Energy saving mode | | | | | | |
| | 03 | Battery priority mode | | | | | | |
| PWM solar controller parameters | Charging current | 20A-30A (optional) | | | 30A-50A (optional) | | | |
| | Max solar input voltage | 30V (12V) | | | 60V (24V) | | | |
| | Temperature compensation | -3mv/°C | | | | | | |
| | Charging mode | PWM intelligent charging | | | | | | |
| | Protect | Over charge, over discharge, overload, short circuit and solar reverse protection | | | | | | |
| The work environment | Temperature | 0-50°C | | | | | | |
| | Humidity | <95%(No dew) | | | | | | |
| Physical | Dimention,L x W x H(mm) | 285 x 255 x 120 | 310 x 185 x 300 | 410 x 225 x 410 | | | | |
| | Dimention,L x W x H(mm) | 345 x 315 x 187 | 380 x 245 x 370 | 552 x 363 x 694 | | | | |
| Packing | Dimention,L x W x H(mm) | 345 x 315 x 187 | 380 x 245 x 370 | 552 x 363 x 694 | | | | |
| | Quantity Per Carton | 1 set per carton | | | | | | |

Product models and specifications are subject to change without prior notice.



Products Description

Product Name : JLSVI Hybrid solar inverter 5000W-30000W.
 Model No.:JLSVI-5000/7000/10000/15000/20000/30000.
 Classification: Off-grid Solar Power Inverter/Low frequency inverter.
 Introduction: All kinds of home appliance,office equipment. solar power system,and other equipments which use single phase power

Technical Parameter Table

- 1.Digital CPU intelligent control, intelligent charging.
- 2.Built in MPPT solar charge controller .
- 3.Built-in MPPT solar charging controller, maximize the solar energy.
- 4.With short circuit, high and low voltage, over temperature, overload protection functions.
- 5.Pure sine wave output , suitable for all kinds of loads.
- 6.Shock resistant, with super load capacity .
- 7.Low power consumption ,high efficiency.

Technical parameters

| Model No | | JLSVI-5000 | JLSVI-7000 | JLSVI-10000 | JLSVI-15000 | JLSVI-20000 | JLSVI-30000 |
|----------------------------------|--------------------------|---|-------------|---------------------|-------------|-------------|-------------|
| Capacity | Rated power | 5KW | 8KW | 10KW | 15KW | 20KW | 30KW |
| | Peak power | 10KW | 16KW | 20KW | 30KW | 40KW | 60KW |
| Input | Standard battery voltage | 48/96VDC | | 96/192/240VDC | | 240V | |
| | AC input voltage range | 170-250VAC | | | | | |
| | AC input frequency | 50Hz: 40-60Hz 60Hz: 45-65Hz | | | | | |
| Output | Conversion efficiency | ≥90% | | | | | |
| | Output voltage | 220VAC ±2%(The battery mode) ±5%(The utility mode) | | | | | |
| | Output frequency | 50/60Hz ± 0.3Hz(The battery mode) Automatic tracking (AC mode) | | | | | |
| | Output wave form | Pure sine wave | | | | | |
| Other | Protect | With over - voltage, overload, low - voltage, high - temperature and short - circuit protection | | | | | |
| | Display | LCD and LED display | | | | | |
| | Cooling way | Intelligent speed control air cooling | | | | | |
| | Communication | RS-232/USB/SNMP(optional) | | | | | |
| AC charging | AC charging voltage | 27.2-28.4VDC(24V)/54.4-56.8VDC(48V)/108.8-113.6VDC(96V)/217.6-227.2VDC(192V) | | | | | |
| | AC charging current | The charging current of 0-35A is adjustable | | | | | |
| Working mode (optional) | 01 | AC priority mode | | | | | |
| | 02 | Energy saving mode | | | | | |
| | 03 | Battery priority mode | | | | | |
| MPPT solar controller parameters | Charging current | 50A-60A (optional) | | 50A-100A (optional) | | | |
| | Max solar input voltage | 100V (48V) / 200V (96V) / 360V (192V) /450V(240V) | | | | | |
| | Temperature compensation | -3mv/°C | | | | | |
| | Charging mode | MPPT intelligent charging | | | | | |
| | Protect | Over charge, over discharge, overload, short circuit and solar reverse protection | | | | | |
| The work environment | Temperature | 0-50°C | | | | | |
| | Humidity | <95%(No dew) | | | | | |
| Physical | Dimention,L x W x H(mm) | 485x300x655 | 540x300x665 | 580x290x675 | 690x360x870 | | |
| | Dimention,L x W x H(mm) | 623x385x709 | 650x385x720 | 690x360x830 | 760x430x830 | | |
| Packing | Dimention,L x W x H(mm) | 623x385x709 | 650x385x720 | 690x360x830 | 760x430x830 | | |
| | Quantity Per Carton | 1 set per carton | | | | | |

Product models and specifications are subject to change without prior notice.



Products Description

Product Name :Low frequency Inverter JGI-1000W-6000W
 Model No.:JGI-1000/1500/2000/3000/4000/5000/6000
 Classification: Low frequency Inverter/Off grid solar inverter
 Introduction: Based on transformer technology,strong loading capacity.
 Used for all kinds of home/office equipments,solar power system.

Technical Parameter Table

- 1.64-bits DSP Intelligent control chipset.
- 2.LED and LCD display with multi-function,Real-time display of dynamic values.
- 3.Built-in automatic AC charger and automatic AC switcher. Switch time ≤5ms.
- 4.Continuous stable pure sine wave output with built-in AVR stabilizer.
- 5.3 times peak power,excellent loading capability.
- 6.High Transfer efficiency is above 90%.

Technical parameters

| Model No | | JGI-1000 | JGI-1500 | JGI-2000 | JGI-3000 | JGI-4000 | JGI-5000 | JGI-6000 |
|-------------------------|--------------------------|---|----------|-------------|-----------------|----------|----------|----------|
| Capacity | Rated power | 1KW | 1.5KW | 2KW | 3KW | 4KW | 5KW | 6KW |
| | Peak power | 3KW | 3.5KW | 6KW | 9KW | 12KW | 15KW | 18KW |
| Input | Standard battery voltage | 12/24VDC | | 12/24/48VDC | | 24/48VDC | | |
| | AC input voltage range | 175-275VAC | | | | | | |
| | AC input frequency | 50Hz: 45-65Hz | | | 60Hz: 55-65Hz | | | |
| Output | Conversion efficiency | ≥92% | | | | | | |
| | Output voltage | 220VAC ± 2%(battery model) ± 5%(The utility model) | | | | | | |
| | Output frequency | 50/60Hz ± 0.3Hz(battery model) Automatic tracking(The utility model) | | | | | | |
| | Output wave form | Pure sine wave | | | | | | |
| Other | Protect | With over-voltage, overload, low-voltage, high-temperature and short-circuit protection | | | | | | |
| | Display | LCD and LED display | | | | | | |
| | Cooling way | Intelligent speed control air cooling | | | | | | |
| | Communication | RS-232/USB/SNMP(optional) | | | | | | |
| AC charging | AC charging voltage | 13.6-14.2VDC(12V)/27.2-28.4VDC(24V)/54.4-56.8VDC(48V) | | | | | | |
| | AC charge current | The charging current of 0-35a is adjustable | | | | | | |
| Working mode (optional) | 01 | AC priority mode | | | | | | |
| | 02 | Energy saving mode | | | | | | |
| | 03 | Battery priority mode | | | | | | |
| Work Environment | Temperature | 0-50℃ | | | | | | |
| | Humidity | <95%(No dew) | | | | | | |
| Physical | Dimension,L x W x H(mm) | 460 x 245 x 200 | | | 630 x 280 x 200 | | | |
| | Quantity Per Carton | 1 set per carton | | | | | | |

Product models and specifications are subject to change without prior notice.



Products Description

Product Name : JGI Series Hybrid Charger Solar inverter 1000W-6000W
 Model No.:JGI-1000/1500/2000/3000/4000/5000/6000
 Classification:Off-grid Charger Solar Inverter/Low frequency pure sine wave inverter
 Introduction: Based on transformer technology,strong loading capacity.
 Used for all kinds of home/office equipments,solar power system

Technical Parameter Table

- 1.64-bits DSP Intelligent control chipset.
- 2.LED and LCD display with multi-function,Real-time display of dynamic values.
- 3.Built-in MPPT solar charging controller, maximize the solar energy.
- 4.Built-in automatic AC charger and automatic AC mains switcher. Switch time ≤5ms.
- 5.High Transfer efficiency is above 90%.
- 6.Continuous stable pure sine wave output with built-in AVR stabilizer.
- 7.3 times surge power,excellent loading capability.

Technical parameters

| Model No | | JGI-1000 | JGI-1500 | JGI-2000 | JGI-3000 | JGI-4000 | JGI-5000 | JGI-6000 |
|---|-----------------------------------|--|-------------|----------|-------------------------------|----------|----------|----------|
| Capacity | Rated power | 1KW | 1.5KW | 2KW | 3KW | 4KW | 5KW | 6KW |
| | Peak power | 3KW | 3.5KW | 6KW | 9KW | 12KW | 15KW | 18KW |
| Input | Standard battery voltage | 12VDC | 12/24/48VDC | | 24/48/96VDC | | | |
| | AC input voltage range | 175-275VAC | | | | | | |
| | AC input frequency | 50Hz: 40-60Hz | | | 60Hz: 55-65H | | | |
| Output | Conversion efficiency | ≥90% | | | | | | |
| | Output voltage | 220VAC ± 3%(battery model) | | | | | | |
| | Output frequency | 50/60Hz ± 0.5Hz(battery model) Automatic tracking (mains mode) | | | | | | |
| | Output wave form | Pure sine wave | | | | | | |
| Other | Protect | With over-voltage, overload, low-voltage, high-temperature and short-circuit protection | | | | | | |
| | Display | LCD and LED display | | | | | | |
| | Cooling way | Intelligent speed control air cooling | | | | | | |
| | Communication | RS-232/USB/SNMP(optional) | | | | | | |
| AC charging | AC charge voltage | 13.6-14.2VDC(12V)/27.2-28.4VDC(24V)/54.4-56.8VDC(48V) | | | | | | |
| | AC charge current | The charging current of 0-35a is adjustable | | | | | | |
| Working mode (optional) | 01 | AC priority mode | | | | | | |
| | 02 | Energy saving mode | | | | | | |
| | 03 | Battery priority mode | | | | | | |
| Technical parameters of MPPT solar controller | Charge current& discharge current | 30A -50A (optional) | | | 30A-60A(optional) | | | |
| | Max solar input power | 420W (12V) / 840W (24V) | | | 1400W (24V) / 2800W (48V) | | | |
| | MPPT input voltage range | 18-60VDC(12V)/30-100VDC(24V) | | | 30-100VDC(24V)/60-150VDC(48V) | | | |
| | Temperature compensation | 4mv/℃ | | | | | | |
| | Charging mode | MPPT intelligent charging | | | | | | |
| The work environment | Protect | It has over charge, over discharge, overload, short circuit and solar reverse protection | | | | | | |
| | Temperature | 0-50℃ | | | | | | |
| Physical | Humidity | <95%(No dew) | | | | | | |
| | Dimension,D x W x H(mm) | 460 x 245 x 200 | | | 630 x 280 x 200 | | | |
| Packing | Dimension,L x W x H(mm) | 530 x 355 x 255 | | | 740 x 355 x 275 | | | |
| | Quantity Per Carton | 1 set per carton | | | | | | |

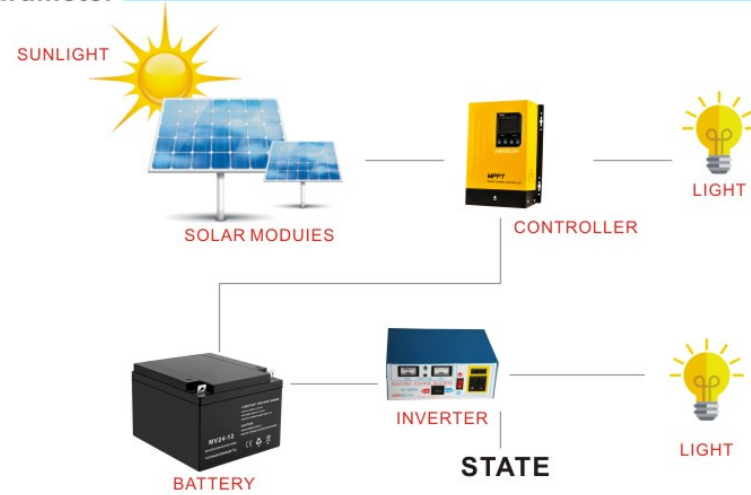
Product models and specifications are subject to change without prior notice.



Functions

- Battery Low Protection
- Over Load Protection
- Short Circuit Protection
- Over-Heating Protection
- Input Reverse Polarity Protection
- Applications: Light, TV, Fan set

Technical Parameter



| Model No | | S-150VA | S-180VA | S-200VA | SI-300VA | SI-500VA | SI-660VA |
|-----------------|--------------------------|--------------------------------|---------|---------|----------------|----------|----------|
| DC Input | Input Rated Voltage(VDC) | 12VDC | | | | | |
| | Actual power (W) | 80% | | | | | |
| AC Output | Voltage(VAC) | 220VAC ± 10% | | | | | |
| | Frequency(Hz) | 50 ± 1Hz | | | | | |
| | Overload Capacity | 150% 10 Seconds | | | | | |
| | Peak Efficiency | ≥80% | | | | | |
| | Output Type | Modified Sine Wave | | | | | |
| Auto Protection | Circuit | IC | | | | | |
| | | Battery low voltage protection | | | | | |
| | | Output overload protection | | | | | |
| | | Short circuit protection | | | | | |
| Environment | Noise(dB) | ≤40% (1 Meter) | | | | | |
| | Temperature | -20~45 degree | | | | | |
| | Humidity | 0~95%(no condensation) | | | | | |
| Package | Sea Level(m) | ≤ 1500 | | | | | |
| | L*W*H (mm) | 47 X 42 X 25cm | | | 55 X 50 X 48cm | | |
| Qty | PCS | 12PCS | | | | | |



Features:

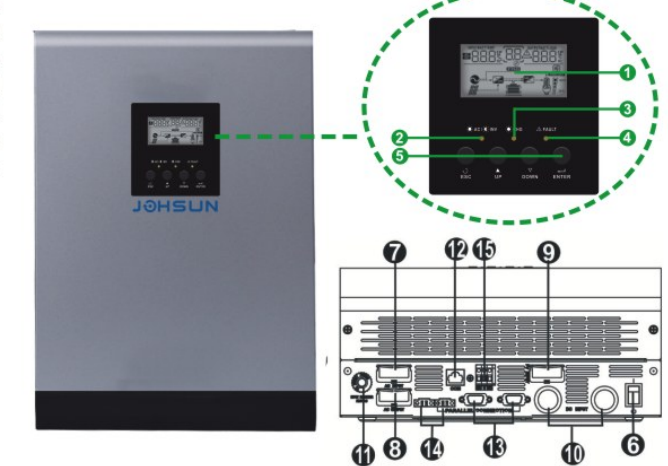
- Pure sine wave inverter
- Built-in PWM solar charge controller
- Selectable input voltage range and frequency according to city power in your country
- Charging current is settable according to your battery type
- Configurable AC/Solar input priority via LCD setting
- Compatible to mains voltage or generator power
- Auto restart while AC is recovering
- Overload and short circuit protection
- Smart charging system optimizes battery performance
- Cold start function



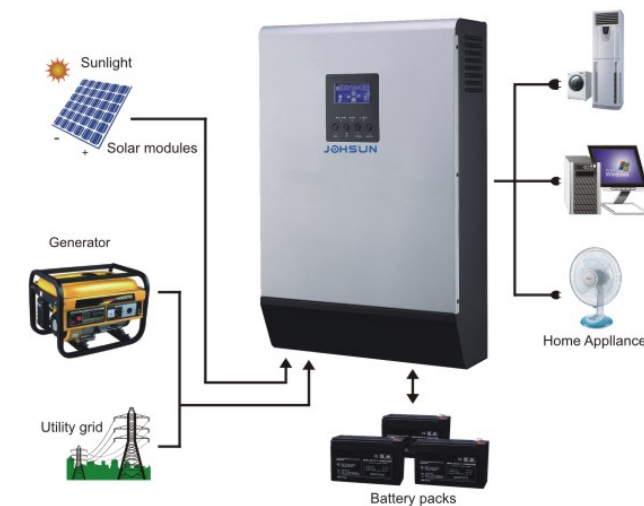
LCD Display Information

Introduction:

Equipped with PWM solar charge controller to maximize and regulate DC power from the solar array for the charging the battery bank. Transformer-less design provides reliable power conversion in compact size and with high efficiency. With aluminum housing, integrated interface system, it's light and handy, making installation easier. It's the ideal inverters for small PV plants, or individually for small houses, both indoors and outdoors.



Solar System Connection



- 1. LCD display
- 2. Status indicator
- 3. Charging indicator
- 4. Fault indicator
- 5. Function buttons
- 6. Power on/off switch
- 7. AC input
- 8. AC output
- 9. PV input
- 10. Battery input
- 11. Circuit breaker
- 12. RS232 communication port
- 13. Parallel communication cable (only for parallel model)
- 14. Current sharing cable (only for parallel model)
- 15. Dry contact
- 16. USB communication port

JPS Inverter Selection Guide

| MODEL | JPS 1K | JPS 3K | JPS 5K |
|---------------------------------------|--|--------------|--------------|
| Rated Power | 1000VA/800W | 3000VA/2400W | 5000VA/4000W |
| INPUT | | | |
| Voltage | 230 VAC | | |
| Selectable Voltage Range | 170–280 VAC (For Personal Computers) 90–280 VAC (For Home Appliances) | | |
| Frequency Range | 50 Hz/60 Hz (Auto sensing) | | |
| OUTPUT | | | |
| AC Voltage Regulation (Batt. Mode) | 230VAC ± 5% | | |
| Surge Power | 2000VA | 6000VA | 10000VA |
| Efficiency(Peak) | 90% | 93% | |
| Transfer Time | 10 ms (For Personal Computers) 20 ms (For Home Appliances) | | |
| Waveform | Pure sine wave | | |
| BATTERY & AC CHARGER | | | |
| Battery Voltage | 12 VDC | 24 VDC | 48 VDC |
| Floating Charge Voltage | 13.5 VDC | 27 VDC | 54 VDC |
| Overcharge Protection | 15 VDC | 30 VDC | 60 VDC |
| Maximum Charge Current | 10A or 20 A | 20A or 30 A | 20A or 30 A |
| SOLAR CHARGER(OPTION) | | | |
| Charging Current | 50A | | |
| Maximum PV Array Open Circuit Voltage | 50 VDC | 60 VDC | 105 VDC |
| Standby Power Consumption | 1 W | 2 W | 2 W |
| PHYSICAL | | | |
| Dimension, D x W x H (mm) | 305*300*110 | 305*272*100 | 413*295*120 |
| Net Weight (kgs) | 4.5 | 6.9 | 9.8 |
| OPERATING ENVIRONMENT | | | |
| Humidity | 5% to 95% Relative Humidity(Non-condensing) | | |
| Operating Temperature | 0° C – 55° C | | |
| Storage Temperature | -15° C – 60° C | | |

*Typical transfer time for parallel operation is 30ms.
Product specifications are subject to change without further notice.



Features:

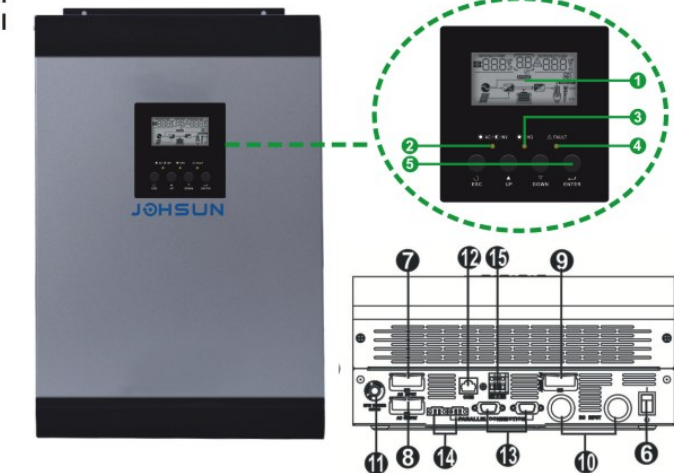
- Pure sine wave inverter
- Built-in MPPT solar charge controller
- Selectable input voltage range for home appliances and personal computers
- Selectable charging current based on applications
- Configurable AC/Solar input priority via LCD setting
- Compatible to mains voltage or generator power
- Auto restart while AC is recovering
- Overload and short circuit protection
- Smart battery charger design for optimized battery performance
- Cold start function
- Parallel operation with up to 9 units available for MKS 4K/5K



Introduction:

Equipped with MPPT solar charge controller to maximize and regulate DC power from the solar array for the charging the battery bank. Transformer-less design provides reliable power conversion in compact size and with high efficiency. With aluminum housing, integrated interface system, it's light and handy, making installation easier. It's the ideal inverters for small PV plants, or individually for small houses, both indoors and outdoors.

LCD Display Information



1. LCD display
2. Status indicator
3. Charging indicator
4. Fault indicator
5. Function buttons
6. Power on/off switch
7. AC input
8. AC output
9. PV input
10. Battery input
11. Circuit breaker
12. RS232 communication port
13. Parallel communication cable (only for parallel model)
14. Current sharing cable (only for parallel model)
15. Dry contact

Solar System Connection



Prowess JMPS Plus Inverter Selection Guide

| MODEL | JMPS 1K-24 | JMPS 3K-24 | JMPS 5K-48 | |
|---------------------------------------|--|---------------|-----------------|----------------|
| Rated Power | 1000VA/800W | 3000VA/2400W | 5000VA/4000W | |
| INPUT | | | | |
| Voltage | 230 VAC | | | |
| Selectable Voltage Range | 170–280 VAC (For Personal Computers) 90–280 VAC (For Home Appliances) | | | |
| Frequency Range | 50 Hz/60 Hz (Auto sensing) | | | |
| OUTPUT | | | | |
| AC Voltage Regulation (Batt. Mode) | 230VAC ± 5% | | | |
| Surge Power | 2000VA | 6000VA | 10000VA | |
| Efficiency(Peak) | 90% -93% | 93% | | |
| Transfer Time | 10 ms (For Personal Computers) 20 ms (For Home Appliances) | | | |
| Waveform | Pure sine wave | | | |
| BATTERY & AC CHARGER | | | | |
| Battery Voltage | 24 VDC | 24 VDC | 48 VDC | |
| Floating Charge Voltage | 27 VDC | 27 VDC | 54 VDC | |
| Overcharge Protection | 31 VDC | 31 VDC | 60 VDC | |
| Maximum Charge Current | 10 A/20 A | 20A or 30 A | 20A or 30 A | |
| SOLAR CHARGER | | | | |
| Maximum PV Array Power | 600 W | 600W | 1500W | 3000 W |
| MPPT Range @ Operating Voltage | 30VDC ~ 66VDC | 30VDC ~ 66VDC | 60VDC ~ 115VDC | 60VDC ~ 115VDC |
| Maximum PV Array Open Circuit Voltage | 75 VDC | 75 VDC | 145 VDC | 145 VDC |
| Maximum Charging Current | 25A | 25A | 60A | 60A/80A |
| Maximum Efficiency | 98% | | | |
| Standby Power Consumption | 2W | | | |
| PHYSICAL | | | | |
| Dimension, D x W x H (mm) | 128 x 272 x 355 | | 140 x 295 x 540 | |
| Net Weight (kgs) | 7.4 | 8.0 | 10 | 11.05/13.5 |
| OPERATING ENVIRONMENT | | | | |
| Humidity | 5% to 95% Relative Humidity(Non-condensing) | | | |
| Operating Temperature | 0° C - 55° C | | | |
| Storage Temperature | -15° C - 60° C | | | |

Product specifications are subject to change without further notice.

| MODEL | JMPS 1K-24 | JMPS 3K-24 | JMPS 5K | |
|------------------------------------|-------------------------|-------------------------|--------------------------|---------------------------|
| Inverter Power | 800W | 2400W | | 4000W |
| Pmax. generated from solar charger | 25Amp 600W | 25Amp 600W | 60Amp 1500W | 80Amp 4000W |
| Best Panel Configuration | 500Wp (250Wp x 2pcs) | 500Wp (250Wp x 2pcs) | 1500Wp (250Wp x 6pcs) | 3000Wp (250Wp x 12pcs) |



Features:

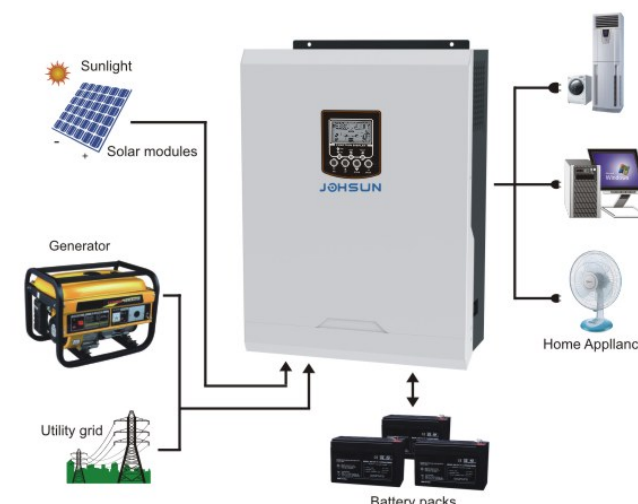
- Pure sine wave inverter
- Built-in PWM solar charge controller
- High efficiency pure sine wave inverter(PF=1);
- Selectable input voltage range and frequency according to city power in your country
- Charging current is settable according to your battery type
- Configurable AC/Solar input priority via LCD setting
- Compatible to mains voltage or generator power
- Auto restart while AC is recovering
- Overload and short circuit protection
- Smart charging system optimizes battery performance
- Cold start function



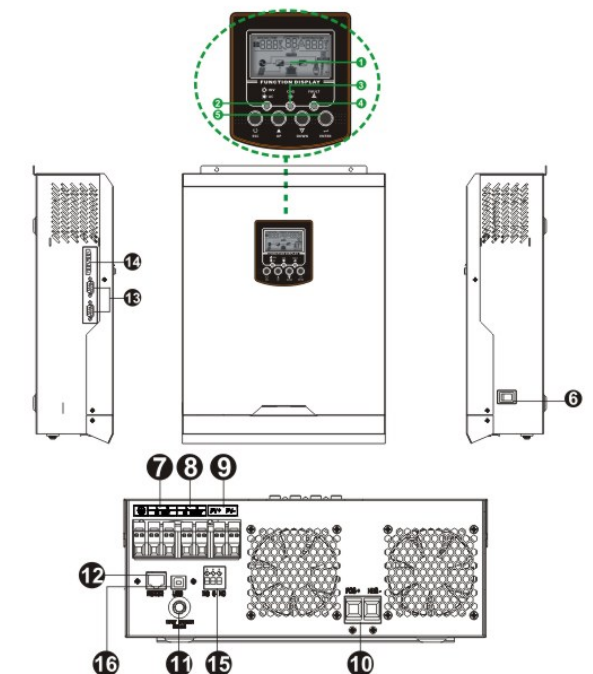
Introduction:

Equipped with PWM solar charge controller to maximize and regulate DC power from the solar array for the charging the battery bank. Transformer-less design provides reliable power conversion in compact size and with high efficiency. With aluminum housing, Integrated interface system, It's light and handy, making installation easier. It's the ideal inverters for small PV plants, or individually for small houses, both indoors and outdoors.

Solar System Connection



LCD Display Information



1. LCD display
2. Status indicator
3. Charging indicator
4. Fault indicator
5. Function buttons
6. Power on/off switch
7. AC input
8. AC output
9. PV input
10. Battery input
11. Circuit breaker
12. RS232 communication port
13. Parallel communication cable (only for parallel model)
14. Current sharing cable (only for parallel model)
15. Dry contact
16. USB communication port

JPS Plus Inverter Selection Guide

| MODEL | JPS 1K | JPS 3K | JPS 5K |
|---------------------------------------|--|--------------|--------------|
| Rated Power | 1000VA/1000W | 3000VA/3000W | 5000VA/5000W |
| INPUT | | | |
| Voltage | 230 VAC | | |
| Selectable Voltage Range | 170–280 VAC (For Personal Computers) 90–280 VAC (For Home Appliances) | | |
| Frequency Range | 50 Hz/60 Hz (Auto sensing) | | |
| OUTPUT | | | |
| AC Voltage Regulation (Batt. Mode) | 230VAC ± 5% | | |
| Surge Power | 2000VA | 6000VA | 10000VA |
| Efficiency(Peak) | 90% | 93% | |
| Transfer Time | 10 ms (For Personal Computers) 20 ms (For Home Appliances) | | |
| Waveform | Pure sine wave | | |
| BATTERY & AC CHARGER | | | |
| Battery Voltage | 12 VDC | 24 VDC | 48 VDC |
| Floating Charge Voltage | 13.5 VDC | 27 VDC | 54 VDC |
| Overcharge Protection | 15 VDC | 30 VDC | 60 VDC |
| Maximum Charge Current | 10A or 20 A | 20A or 30 A | 20A or 30 A |
| SOLAR CHARGER(OPTION) | | | |
| Charging Current | 50A | | |
| Maximum PV Array Open Circuit Voltage | 50 VDC | 60 VDC | 105 VDC |
| Standby Power Consumption | 1 W | 2 W | 2 W |
| PHYSICAL | | | |
| Dimension, D x W x H (mm) | 387×300×118 | | |
| Net Weight (kgs) | 4.5 | 6.9 | 10 |
| OPERATING ENVIRONMENT | | | |
| Humidity | 5% to 95% Relative Humidity(Non-condensing) | | |
| Operating Temperature | 0° C – 55° C | | |
| Storage Temperature | -15° C – 60° C | | |

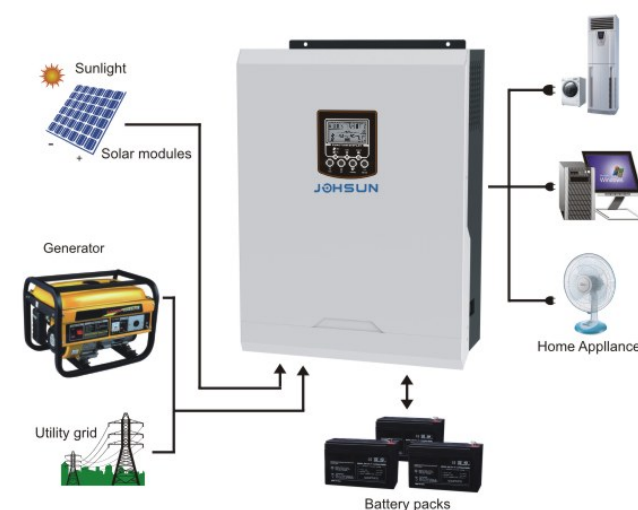
*Typical transfer time for parallel operation is 30ms.
Product specifications are subject to change without further notice.



Introduction:

Equipped with MPPT solar charge controller to maximize and regulate DC power from the solar array for the charging the battery bank. Transformer-less design provides reliable power conversion in compact size and with high efficiency. With aluminum housing, integrated interface system, it's light and handy, making installation easier. It's the ideal inverters for small PV plants, or individually for small houses, both indoors and outdoors.

Solar System Connection

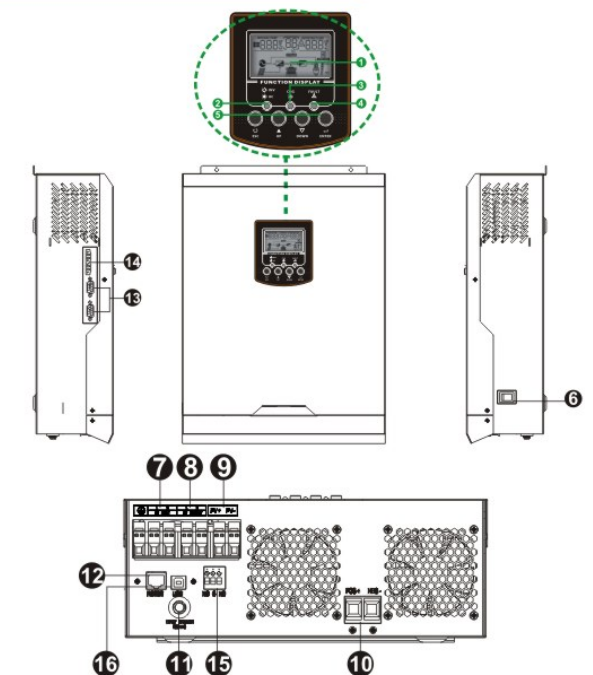


Features:

- Pure sine wave inverter
- Built-in MPPT solar charge controller
- High efficiency pure sine wave inverter(PF=1);
- Selectable input voltage range for home appliances and personal computers
- Selectable charging current based on applications
- Configurable AC/Solar input priority via LCD setting
- Compatible to mains voltage or generator power
- Auto restart while AC is recovering
- Overload and short circuit protection
- Smart battery charger design for optimized battery performance
- Cold start function
- Parallel operation with up to 9 units available for MKS 4K/5K



LCD Display Information



1. LCD display
2. Status indicator
3. Charging indicator
4. Fault indicator
5. Function buttons
6. Power on/off switch
7. AC input
8. AC output
9. PV input
10. Battery input
11. Circuit breaker
12. RS232 communication port
13. Parallel communication cable (only for parallel model)
14. Current sharing cable (only for parallel model)
15. Dry contact
16. USB communication port

Prowess JMPS Plus Inverter Selection Guide

| MODEL | JMPS 1K-24 | JMPS 3K-24 | JMPS 5K-48 | |
|---------------------------------------|--|---------------|----------------|----------------|
| Rated Power | 1000VA/1000W | 3000VA/3000W | 5000VA/5000W | |
| INPUT | | | | |
| Voltage | 230 VAC | | | |
| Selectable Voltage Range | 170–280 VAC (For Personal Computers) 90–280 VAC (For Home Appliances) | | | |
| Frequency Range | 50 Hz/60 Hz (Auto sensing) | | | |
| OUTPUT | | | | |
| AC Voltage Regulation (Batt. Mode) | 230VAC ± 5% | | | |
| Surge Power | 2000VA | 6000VA | 10000VA | |
| Efficiency(Peak) | 90% -93% | 93% | | |
| Transfer Time | 10 ms (For Personal Computers) 20 ms (For Home Appliances) | | | |
| Waveform | Pure sine wave | | | |
| BATTERY & AC CHARGER | | | | |
| Battery Voltage | 24 VDC | 24 VDC | 48 VDC | |
| Floating Charge Voltage | 27 VDC | 27 VDC | 54 VDC | |
| Overcharge Protection | 31 VDC | 31 VDC | 60 VDC | |
| Maximum Charge Current | 10 A/20 A | 20A or 30 A | 20A or 30 A | |
| SOLAR CHARGER | | | | |
| Maximum PV Array Power | 600 W | 600W | 1500W | 3000 W |
| MPPT Range @ Operating Voltage | 30VDC ~ 66VDC | 30VDC ~ 66VDC | 60VDC ~ 115VDC | 60VDC ~ 115VDC |
| Maximum PV Array Open Circuit Voltage | 75 VDC | 75 VDC | 145 VDC | 145 VDC |
| Maximum Charging Current | 25A | 25A | 60A | 60A/80A |
| Maximum Efficiency | 98% | | | |
| Standby Power Consumption | 2W | | | |
| PHYSICAL | | | | |
| Dimension, D x W x H (mm) | 387x300x118 | | | |
| Net Weight (kgs) | 7.4 | 8.0 | 10 | 10.5 |
| OPERATING ENVIRONMENT | | | | |
| Humidity | 5% to 95% Relative Humidity(Non-condensing) | | | |
| Operating Temperature | 0° C – 55° C | | | |
| Storage Temperature | -15° C – 60° C | | | |

Product specifications are subject to change without further notice.

| MODEL | JMPS 1K-24 | JMPS 3K-24 | | JMPS 5K |
|------------------------------------|-------------------------|-------------------------|--------------------------|---------------------------|
| Inverter Power | 800W | 2400W | | 4000W |
| Pmax. generated from solar charger | 25Amp 600W | 25Amp 600W | 60Amp 1500W | 80Amp 4000W |
| Best Panel Configuration | 500Wp (250Wp x 2pcs) | 500Wp (250Wp x 2pcs) | 1500Wp (250Wp x 6pcs) | 3000Wp (250Wp x 16pcs) |

Introduction:

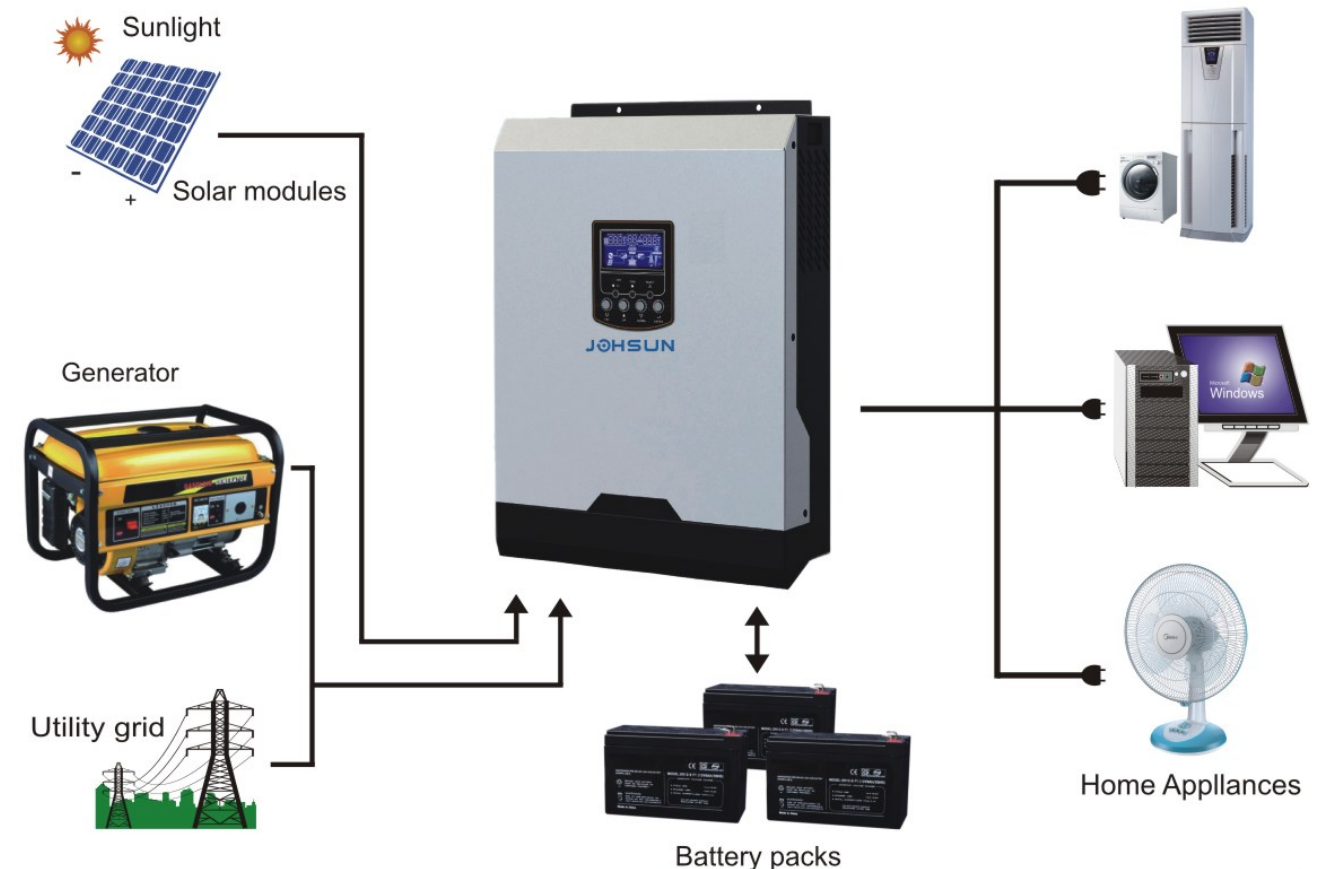
The MPS-V series all in one solar system is the perfect go-to solution for off-grid, backup power for homes, small business, and it also delivers a value added, easy to install system that provides efficient power globally for every need.

Features:

- High efficiency pure sine wave inverter(PF=1);
- Wide PV input range(120Vdc--500Vdc)80A MPPT SCC; intelligent 3 stage 60A/80A AC charger.
- Surges to 2X continuous power for 5 seconds for motor loads.
- Intelligent functionality enables utility and solar input prioritization.
- Wide utility input range(90Vac--280Vac)for unreliable grid even
- In the most challenging environments.
- Field serviceable with replacement boards and spare parts.
- Monitor, troubleshoot, or communication with USB/RS232.
- System configures quickly into compact, wall-mount-ed system.
- Working without batteries in sun day.



Solar System Connection



JMPS All In One Solar Inverter

| Model | JMPS-V-3000-24 | JMPS-V-5000-48 |
|---------------------------------------|--|----------------|
| RATED POWER | 3200VA/3200W | 5000VA/5000W |
| INPUT | | |
| Voltage | 230 VAC | |
| Selectable Voltage Range | 170-280 VAC (For Personal Computers) 90-280 VAC (For Home Appliances) | |
| Frequency Range | 50 Hz/60 Hz (Auto sensing) | |
| OUTPUT | | |
| AC Voltage Regulation (Batt. Mode) | 230VAC ± 5% | |
| Surge Power | 6000VA | 10000VA |
| Efficiency (Peak) PV to INV. | 97% | |
| Efficiency (Peak) Battery to INV. | 94% | |
| Transfer Time | 10 ms (For Personal Computers) ; 20 ms (For Home Appliances) | |
| Waveform | Pure sine wave | |
| BATTERY & AC CHARGER | | |
| Battery Voltage | 24 VDC | 48 VDC |
| Floating Charge Voltage | 27 VDC | 54 VDC |
| Overcharge Protection | 33 VDC | 63 VDC |
| Maximum Charge Current | 80 A | 60 A |
| SOLAR CHARGER | | |
| Maximum PV Array Power | 4000 W | |
| MPPT Range @ Operating Voltage | 120 ~ 450 VDC | |
| Maximum PV Array Open Circuit Voltage | 500 VDC | |
| Maximum Charging Current | 80A | |
| Maximum Efficiency | 98% | |
| PHYSICAL | | |
| Dimension, D x W x H (mm) | 100 x 300 x 440 | |
| Net Weight (kgs) | 9 | 10 |
| Communication interface | USB/RS232 | |
| OPERATING ENVIRONMENT | | |
| Humidity | 5% to 95% Relative Humidity(Non-condensing) | |
| Operating Temperature | 0°C - 55°C | |
| Storage Temperature | -15°C - 60°C | |



JP-E SERIES
HIGH FREQUENCY CAR PURE SINE WAVE INVERTER



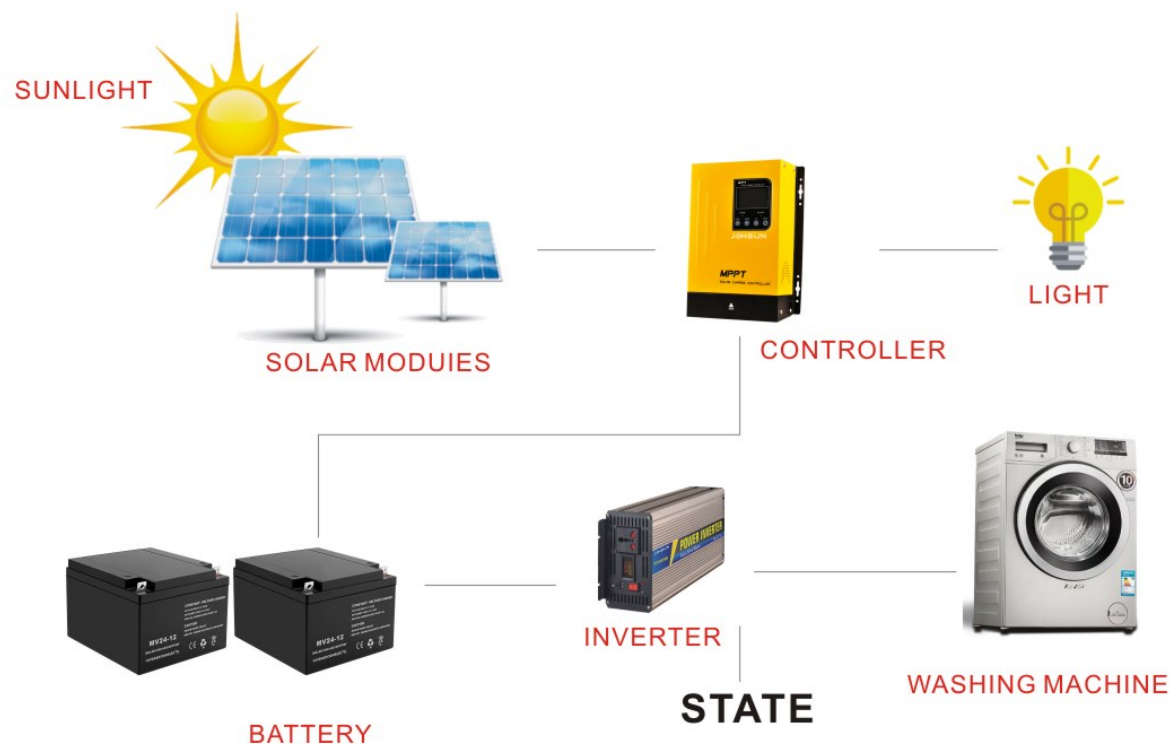
Technical parameters

| Model | JP-E300 | JP-E500 | JP-E1000 | JP-E1500 | JP-E2000 | JP-E3000 | JP-E4000 | JP-E5000 | JP-E6000 | JP-E8000 |
|------------------------|--|-------------|----------------|---------------|-------------|--------------|----------------|----------------|--------------|--------------|
| Rated Power | 300W | 500W | 1000W | 1500W | 2000W | 3000W | 4000W | 5000W | 6000W | 8000W |
| Surge Power | 600W | 1000W | 2000W | 3000W | 4000W | 6000W | 8000W | 10000W | 12000W | 16000W |
| Input Voltage | 12/24/48VDC | | | | | | | 24/48VDC | | |
| Output Voltage | 110/220VAC ± 5% | | | | | | | | | |
| USB Port | 5V 1A | | | | | | | | | |
| Frequency | 50Hz ± 3 or 60Hz ± 3 | | | | | | | | | |
| Output Waveform | Pure Sine Wave | | | | | | | | | |
| Soft Start | YES | | | | | | | | | |
| THD / AC Regulation | THD < 3%(Linear Load) | | | | | | | | | |
| Output Efficiency | 94% MAX | | | | | | | | | |
| Cooling Way | Intelligent Cooling Fan | | | | | | | | | |
| Protection | Battery Low Voltage & Over Voltage, Over Load, Over Temperature, Short Circuit | | | | | | | | | |
| Working Temperature | -10°C - +50°C | | | | | | | | | |
| Dimension (L*W*H) (cm) | 19.5*11.2*6 | 23.2*15*7.8 | 32.6*16.5*8.7 | 36.2*16.5*8.7 | 43*16.5*8.7 | 41*21.6*15.6 | 46.5*21.6*15.6 | 46.5*21.6*15.6 | 50*21.6*15.6 | 55*21.6*15.6 |
| Meas./Ctn (L*W*H) (cm) | 51*49*30.7 | 63*34*38.5 | 67.5*37.3*29.7 | 52*47.5*38 | 52*47.5*38 | 52*47.5*38 | 52.5*31.5*25 | 57.5*31.5*25 | 57.5*31.5*25 | 62*31.5*25 |
| Packing | Honeycomb carton | | | | | | | | | |



Technical parameters

| Model | JP-D300 | JP-D500 | JP-D1000 | JP-D1500 | JP-D2000 | JP-D3000 | JP-D4000 | JP-D5000 | JP-D6000 | JP-D8000 |
|------------------------|--|-------------|----------------|---------------|-------------|--------------|----------------|----------------|--------------|--------------|
| Rated Power | 300W | 500W | 1000W | 1500W | 2000W | 3000W | 4000W | 5000W | 6000W | 8000W |
| Surge Power | 600W | 1000W | 2000W | 3000W | 4000W | 6000W | 8000W | 10000W | 12000W | 16000W |
| Input Voltage | 12/24/48VDC | | | | | 24/48VDC | | | | |
| Output Voltage | 110/220VAC ± 5% | | | | | | | | | |
| USB Port | 5V 1A | | | | | | | | | |
| Frequency | 50Hz ± 3 or 60Hz ± 3 | | | | | | | | | |
| Output Waveform | Pure Sine Wave | | | | | | | | | |
| Soft Start | YES | | | | | | | | | |
| THD / AC Regulation | THD < 3%(Linear Load) | | | | | | | | | |
| Output Efficiency | 94% MAX | | | | | | | | | |
| Cooling Way | Intelligent Cooling Fan | | | | | | | | | |
| Protection | Battery Low Voltage & Over Voltage, Over Load, Over Temperature, Short Circuit | | | | | | | | | |
| Working Temperature | -10°C - +50°C | | | | | | | | | |
| Dimension (L*W*H) (cm) | 19.5*11.2*6 | 23.2*15*7.8 | 32.6*16.5*8.7 | 36.2*16.5*8.7 | 43*16.5*8.7 | 41*21.6*15.6 | 46.5*21.6*15.6 | 46.5*21.6*15.6 | 50*21.6*15.6 | 55*21.6*15.6 |
| Meas./Ctn (L*W*H) (cm) | 51*49*30.7 | 63*34*38.5 | 67.5*37.3*29.7 | 52*47.5*38 | 52*47.5*38 | 52.5*31.5*25 | 57.5*31.5*25 | 57.5*31.5*25 | 62*31.5*25 | 65*31.5*25 |
| Packing | Honeycomb carton | | | | | | | | | |



Specifications :

| Model | TX-100(100W)/TX150(150W) |
|-------------------------|----------------------------------|
| Input voltage | DC 12V(10.5-14.8V)/24V(20-28V) |
| Output voltage | AC220V,230V,240V(100V,110V,120V) |
| Continuous Output Power | 100W,150W |
| Peak Power(Max) | 150W,225W |
| Waveform | Modified Sine Wave |
| Output Frequency | 50Hz/60Hz/ ±4Hz |
| Availability power | ≥90.5% |
| Low voltage alarm | 10.5V±0.5V |
| Low voltage range | <9.6V |
| High voltage range | >14.8V |
| Non-load current | ≤0.4A |
| Overload protection | >100W / >150W |
| Overheat protection | >60°C |
| Fuse | 1×15A |
| Cooling fan | Yes |
| With USB charging port | DC5.5V±0.5V |
| USB port output current | 500mA |

Can charge laptop computer and mobile phone at the same time

Specifications :

| Model | TX-200(200W)/TX300(300W) |
|-------------------------|----------------------------------|
| Input voltage | DC 12V(10.5-14.8V)/24V(20-28V) |
| Output voltage | AC220V,230V,240V(100V,110V,120V) |
| Continuous Output Power | 200W,300W |
| Peak Power(Max) | 300W,450W |
| Waveform | Modified Sine Wave |
| Output Frequency | 50Hz/60Hz/ ±4Hz |
| Availability power | ≥90.5% |
| Low voltage alarm | 10.5V±0.5V |
| Low voltage range | <9.6V |
| High voltage range | >14.8V |
| Non-load current | ≤0.4A |
| Overload protection | >200W / >300W |
| Overheat protection | >60°C |
| Fuse | 1×15A / 2×20A |
| Cooling fan | Yes |
| With USB charging port | DC5.5V±0.5V |
| USB port output current | 500mA |

Can charge laptop computer and mobile phone at the same time



TX-400
SIZE:127*95*55mm



TX-500
SIZE:167*95*55mm



TX-1000
SIZE:260*190*71mm



TX-1500
SIZE:232*127*50mm



TX-600
SIZE:195*128*50mm



TX-800
SIZE:140*87*47mm



TX-2000
SIZE:255*150*70mm



TX-3000
SIZE:410*190*71mm

Specifications :

| | |
|-------------------------|----------------------------------|
| Model | TX-400(400W)/TX500(500W) |
| Input voltage | DC 12V(10.5-14.8V)/24V(20-28V) |
| Output voltage | AC220V,230V,240V(100V,110V,120V) |
| Continuous Output Power | 400W,500W |
| Peak Power(Max) | 600W,750W |
| Waveform | Modified Sine Wave |
| Output Frequency | 50Hz/60Hz/ ±4Hz |
| Availability power | ≥90.5% |
| Low voltage alarm | 10.5V±0.5V |
| Low voltage range | <9.6V |
| High voltage range | >14.8V |
| Non-load current | ≤0.4A |
| Overload protection | >400W / >500W |
| Overheat protection | >60°C |
| Fuse | 2×25A / 2×30A |
| Cooling fan | Yes |

Can charge laptop computer and mobile phone at the same time

Specifications :

| | |
|-------------------------|----------------------------------|
| Model | TX-600(600W)/TX800(800W) |
| Input voltage | DC 12V(10.5-14.8V)/24V(20-28V) |
| Output voltage | AC220V,230V,240V(100V,110V,120V) |
| Continuous Output Power | 600W,800W |
| Peak Power(Max) | 900W,1200W |
| Waveform | Modified Sine Wave |
| Output Frequency | 50Hz/60Hz/ ±4Hz |
| Availability power | ≥90.5% |
| Low voltage alarm | 10.5V±0.5V |
| Low voltage range | <9.6V |
| High voltage range | >14.8V |
| Non-load current | ≤0.4A |
| Overload protection | >800W |
| Overheat protection | >60°C |
| Fuse | 4×25A |
| Cooling fan | Yes |

Specifications :

| | |
|--------------------------|----------------------------------|
| Model | TX-1000(1000W)/TX1500(1500W) |
| Input voltage | DC 12V(10.5-14.8V)/24V(20-28V) |
| Output voltage | AC220V,230V,240V(100V,110V,120V) |
| Continuous Output Power | 1000W,1500W |
| Peak Power(Max) | 1500W,2250W |
| Waveform | Modified Sine Wave |
| Output Frequency | 50Hz/60Hz/ ±4Hz |
| Availability power | ≥90.5% |
| Low voltage alarm | 10.5V±0.5V |
| Low voltage range | <9.6V |
| High voltage range | >14.8V |
| Non-load current | ≤0.4A |
| Overload protection | >1000W |
| Overheat protection | >60°C |
| Fuse | 4×30A |
| Cooling fan | Yes |
| Charging Function | Yes |
| Input of Charging | AC 110V-240V |
| Output of Charging | DC 13.8V/DC27.6 |
| The AMP of Charging | about 10A |
| Reverse Protection | Yes |
| Short-circuit protection | Yes |

Specifications :

| | |
|-------------------------|----------------------------------|
| Model | TX-2000(2000W)/TX3000(3000W) |
| Input voltage | DC 12V(10.5-14.8V)/24V(20-28V) |
| Output voltage | AC220V,230V,240V(100V,110V,120V) |
| Continuous Output Power | 2000W,3000W |
| Peak Power(Max) | 3000W,4500W |
| Waveform | Modified Sine Wave |
| Output Frequency | 50Hz/60Hz/ ±4Hz |
| Availability power | ≥90.5% |
| Low voltage alarm | 10.5V±0.5V |
| Low voltage range | <9.6V |
| High voltage range | >14.8V |
| Non-load current | ≤0.4A |
| Overload protection | >3000W |
| Overheat protection | >60°C |
| Fuse | 6×40A |
| Cooling fan | Yes |
| Charging Function | Yes |
| Input of Charging | AC 110V-240V |
| Output of Charging | DC 13.8V/DC27.6 |
| The AMP of Charging | about 10A |



Products Description

True double-conversion Microprocessor control optimizes reliability 50/60 Hz Frequency Converter
 Mode Output power factor 0.8 Wide input voltage(110V-300V)
 Converter mode available Generator compatible
 Smart SNMP works well with either USB or RS-232 together(Optional)
 Emergency power off function(EPO)only available for 6K/10K models
 DSP technology applied for 6-10K models

Technical parameters

| High Frequency UPS | | | | | | | | | | | |
|------------------------------------|--|---------------------------|-------------------------|---------------------------|----------------|---------------------------|----------------------------------|---------------------------|----------------------------------|---------------------------|--|
| Model | JP1K | JP1KL | JP2K | JP2KL | JP3K | JP3KL | JP6K | JP6KL | JP10K | JP10KL | |
| Capacity | 1000 VA/800 W | | 2000 VA/1600 W | | 3000 VA/2400 W | | 6000 VA/4800 W | | 10000 VA/8000 W | | |
| Battery Voltage | 12V7AHx2 | 36VDC | 12V7AHx4 | 72VDC | 12V7AHx6 | 96VDC | 12V7AHx16 | 192VDC | 12V7AHx16 | 192VDC | |
| Size, DxWxH(mm) | 282x145x220 | 282x145x220 | 397x145x220 | 397x145x220 | 419x190x318 | 397x145x220 | 369x190x688 | 369x190x318 | 442x190x688 | 442x190x318 | |
| Net Weight(kgs) | 7.75 | 4 | 14.1 | 6.7 | 23.23 | 7.25 | 51 | 11.5 | 56 | 15 | |
| Voltage Range | Low Line Transfer | | 160/140/120/110 VAC ±5% | | | | | | | | |
| | Low Line Comeback | | 175/155/135/125 VAC ±5% | | | | | | 168/148/128/118 VAC ±5% | | |
| | High Line Transfer | | 300 VAC ±5% | | | | | | | | |
| | High Line Comeback | | 290 VAC ±5% | | | | | | | | |
| Frequency Range | 40 Hz~70 Hz | | | | | | 46~64 Hz or 56 ~64 Hz | | | | |
| Phase | Single Phase With Ground | | | | | | | | | | |
| Power Factor | ≥0.99 @ Norminal voltage | | | | | | | | | | |
| Output Voltage | 100/110/115/120/127 VAC or 200/208/220/230/240 VAC | | | | | | 208/220/230/240 VAC | | | | |
| AC Voltage Regulation | ±1% | | | | | | | | | | |
| Frequency Range(Synchronize Range) | 47~63 HZ or 57 ~63 HZ | | | | | | 46~64 Hz or 56 ~64 Hz | | | | |
| Frequency Range(Batt. Mode) | 50 Hz ±0.25 Hz or 60 Hz ±0.3 Hz | | | | | | 50 Hz or 60 Hz ±0.1 Hz | | | | |
| Current Crest Ratio | 3:1 | | | | | | | | | | |
| Harmonic Distortion | ≤3% THD(Linear Load) | | | | | | ≤3% THD(Linear Load) | | | | |
| | ≤6% THD(Non-linear Load) | | | | | | ≤5% THD(Non-linear Load) | | | | |
| Transfer Time | AC Mode to Batt. Mode | | Zero | | | | | | | | |
| | Inverter to Bypass | | 4 ms | | | | | | Zero | | |
| Waveform(Batt. Mode) | Pure Sinewave | | | | | | | | | | |
| AC Mode | 88% | | 88% | | 90% | | 92% | | 93% | | |
| Battery Mode | 83% | | 87% | | 88% | | 90% | | 91% | | |
| Battery Type | 12 V/7 Ah | Depending on applications | 12 V/7 Ah | Depending on applications | 12 V/7 Ah | Depending on applications | 12 V/7 Ah | Depending on applications | 12 V/7 Ah | Depending on applications | |
| Battery Numbers | 2 | | 4 | | 6 | | 16 | | 16 | | |
| Recharge Time | 4 hours recover to 90% capacity | | | | | | 9 hours recover to 90% capacity | | | | |
| Charging Current | 1 A | 1A/2A/4A/6A (Adjustable) | 1 A | 1A/2A/4A/6A (Adjustable) | 1 A | 1A/2A/4A/6A (Adjustable) | 1 A | 1A/2A/4A/6A (Adjustable) | 1 A | 1A/2A/4A/6A (Adjustable) | |
| Charging Voltage | 27.4VDC±1% | 41VDC±1% | 54.7VDC±1% | 82.1VDC±1% | 82.1VDC±1% | 109.4VDC±1% | 218.4VDC±1% | | | | |
| Operation Humidity | 20-90% RH @ 0-40 °C Non-condensing | | | | | | 0-95% RH @ 0-50°C Non-condensing | | 0-95% RH @ 0-40°C Non-condensing | | |
| Noise Level | Less than 50dBA @ 1 Meter | | | | | | Less than 55dBA @1 Meter | | Less than 55dBA @1 Meter | | |
| Management | | | | | | | | | | | |
| Smart RS-232 or USB | Support Windows® 2000/2003/XP/Vista/2008,Windows® 7/8, Linux, Unix and MAC | | | | | | | | | | |
| Optional SNMP | Power management from SNMP Management and web browser | | | | | | | | | | |

Product specifications are subject to change without further notice

Products Description

True double-conversion
 DSP technology guarantees high performance 50/60 Hz Frequency Converter Mode
 Output power factor 0.8
 Wide input voltage(110V-300V)
 ECO mode operation for energy saving Generator compatible
 Smart SNMP works well with either USB or RS-232 together(Optional)
 Emergency power off function(EPO)

Technical parameters

| High Frequency UPS | | | | | |
|------------------------------------|--|---------------------------|-------------------------------|---|---------------------------|
| Model | 3P20KL | 33P10KL | 33P20KL | 33P30KL | 33P40KL |
| Capacity | 20000VA/16000W | 10000VA/9000W | 20000VA/18000W | 30000VA/27000W | 40000VA/36000W |
| Battery Voltage | 192VDC | 192VDC | 240VDC | 240VDC | 240VDC |
| Size, DxWxH(mm) | 442x190x318 | 592x250x576 | 592x250x576 | 815x300x1000 | 815x300x1000 |
| Net Weight(kgs) | 16 | 38 | 40 | 64 | 82 |
| Input | | | | | |
| Voltage Range | 190~520VAC(3ph)@ 50% load, 305~520VAC(3ph)@100% load | | | | |
| Frequency Range | 46Hz- 54Hz at 50Hz 56Hz - 64Hz at 60Hz | | | | |
| Phase | 3 phases with Neutral wire and ground | | | | |
| Power Factor | ≥0.99 @ Norminal voltage | | | | |
| Output | | | | | |
| Output Voltage | 200/208/220/230/240VAC | | 3 × 360/380/400/415VAC(3Ph+N) | | |
| AC Voltage Regulation | ±1% | | | | |
| Frequency Range(Synchronize Range) | 46Hz-54Hz @ 50Hz 56Hz ~64Hz @ 60Hz | | | | |
| Frequency Range(Batt. Mode) | 50Hz ±0.1Hz or 60Hz ±0.1Hz | | | | |
| Current Crest Ratio | 3:1 max | | | | |
| Harmonic Distortion | ≤3% THD(Linear Load) | | ≤2% THD(Linear Load) | | |
| | ≤5% THD(Non-linear Load) | | ≤5% THD(Non-linear Load) | | |
| Transfer Time | AC Mode to Batt. Mode | | Zero | | |
| | Inverter to Bypass | | Zero | | |
| Waveform(Batt. Mode) | Pure Sinewave | | | | |
| Efficiency | | | | | |
| AC Mode | >91% | 91% | 92% | 94% | 94% |
| Battery Mode | >91% | 87% | 88% | 92% | 92% |
| Battery | | | | | |
| Battery Type | Depending on applications | Depending on applications | Depending on applications | Depending on applications | Depending on applications |
| Battery Numbers | 16 | 16 | 16 | 20 | 20 |
| Recharge Time | 9 hours recover to 90% capacity | | | 9 hours recover to 90% capacity | |
| Charging Current | 1A/2A/4A/6A (Adjustable) | 4.0A ± 10% | 4.0A ± 10% | 4.0A ± 10%(max.) | 4.0A ± 10%(max.) |
| Charging Voltage | 218.4VDC±1% | 218.4VDC±1% | 218.4VDC±1% | 273VDC±1% | |
| Environment | | | | | |
| Operation Humidity | 20-90% RH @ 0-40 °C Non-condensing | | | 0-95% RH @ 0-50°C Non-condensing 0-95% RH @ 0-40°C Non-condensing | |
| Noise Level | Less than 50dBA @ 1 Meter | | | | |
| Management | | | | | |
| Smart RS-232 or USB | Support Windows® 2000/2003/XP/Vista/2008,Windows® 7/8, Linux, Unix and MAC | | | | |
| Optional SNMP | Power management from SNMP Management and web browser | | | | |

Product specifications are subject to change without further notice



Products Description

- Online double-conversion
- True galvanic isolation transformer design
- Control designed to withstand all kinds of loads
- Redundant fan design and independent ventilation enhance durable operation under harsh environment
- Parallel operation with up to 4 units(option)
- Variety of communication options available

Technical parameters

| Model | JS10K | JS15K | JS20K | JS30K | JS40K | JS60K | JS80K | JS100K | JS120K | JS160K | JS200K |
|---|---|------------|-----------------|------------|------------------|------------|------------------|-------------|-------------------|--------------|--------------|
| Capacity | 10KVA/8KW | 15KVA/12KW | 20KVA/16KW | 30KVA/24KW | 40KVA/32KW | 60KVA/48KW | 80KVA/64KW | 100KVA/80KW | 120KVA/96KW | 160KVA/128KW | 200KVA/160KW |
| Size: D x W x H(mm) | 656 x 405 x 817 | | 656 x 405 x 941 | | 821 x 432 x 1159 | | 975 x 554 x 1286 | | 1051 x 705 x 1376 | | |
| Net Weight(kgs) | 118 | 120 | 133 | 193 | 256 | 297 | 400 | 472 | 573 | 785 | 840 |
| Input | | | | | | | | | | | |
| Nominal Voltage | 3 x 380VAC/400VAC (3Ph + N) | | | | | | | | | | |
| Voltage Range | 285VAC ~ 475VAC | | | | | | | | | | |
| Frequency | 50/60 Hz ± 10 % | | | | | | | | | | |
| Output | | | | | | | | | | | |
| Nominal Voltage | 3 x 380VAC/400VAC (3Ph + N) | | | | | | | | | | |
| Precision | Stationary: ±1% Transitory: ±5% (load variations 100-0-100%) | | | | | | | | | | |
| Frequency | 50/60 Hz synchronised ± 1 %With mains absent ±0.1 Hz | | | | | | | | | | |
| Max. Synchronisation speed | ±1 Hz/s | | | | | | | | | | |
| Waveform | Pure Sinewave | | | | | | | | | | |
| Total Harmonic Distortion(THDv) | <3% (Linear Load)<6% (Non-linear load) | | | | | | | | | | |
| Phase Displacement | 120° ±1% (balanced load) 120° ±2% (imbalances 50% of the load) | | | | | | | | | | |
| Dynamic Recovery Time | 3 cycles at 90% of the static value | | | | | | | | | | |
| Admissible overload | 110% ~ 150% 10min~1min; 150% ~ >160% 1min~200ms; 200ms for >160% | | | | | | | | | | |
| Admissible Crest Factor | 3:1 | | | | | | | | | | |
| Admissible Power Factor | 0.6~1 (inductive or capacitive) | | | | | | | | | | |
| Imbalance Output Voltage @ 100% Unbalanced Load | <1% | | | | | | | | | | |
| Current Limit | High overload, short circuit, RMS Voltage Limit, High Crest Factor current, Peak Voltage Limit. | | | | | | | | | | |
| Efficiency | 88% | 89% | 90% | 91% | 91% | 91% | 91% | 92% | 92% | 92% | 92% |
| STATIC BYPASS | | | | | | | | | | | |
| Type | Solid state | | | | | | | | | | |
| Voltage | 3 x 380VAC/400VAC (3Ph + N) | | | | | | | | | | |
| Frequency | 50/60 Hz | | | | | | | | | | |
| Activation Criterion | Microprocessor control | | | | | | | | | | |
| Transfer Time | zero | | | | | | | | | | |
| Admissible overload | 150% ~ 180% 1h~30s; 180% ~ >200% 30s~200ms; 200ms for >200% | | | | | | | | | | |
| Transfer to Bypass | Immediate, for overload above 160% | | | | | | | | | | |
| Retransfer | Automatic after alarm clear | | | | | | | | | | |
| MAINTENANCE BYPASS | | | | | | | | | | | |
| Type | Without interruption | | | | | | | | | | |
| Voltage | 3 x 400V (3Ph + N) | | | | | | | | | | |
| Frequency | 50/60 Hz | | | | | | | | | | |
| BATTERY & CHARGER | | | | | | | | | | | |
| Battery Type and Numbers(12V) | 29/30/31/32 (adjustable) | | | | | | | | | | |
| Charging Method | CC/CV | | | | | | | | | | |
| Charging Current | Default 10A, Max. = Capacity/Battery Voltage Default: 10A, Max. 40A | | | | | | | | | | |

Product specifications are subject to change without further notice



Products Description

- Compact size
- Intelligent CPU control
- Boost and buck AVR for voltage stabilization
- Off-mode charging
- Cold start function
- Auto restart while AC is recovering
- RS232/USB port optional
- Personal Computer
- Printer
- POS (Point of sales) Terminals
- Security System
- Fax Machine
- Modem, Router

Technical parameters

| MODEL | JSI-650 | JSI-800 | JSI-1000 | JSI-1500 | JSI-2000 | JSI-3000 |
|-------------------------------|--|-------------|-------------|-------------|--------------|--------------|
| Capacity | 650VA/360W | 800VA/480W | 1000VA/600W | 1500VA/900W | 2000VA/1200W | 3000VA/1800W |
| Input | | | | | | |
| Voltage | 110V/120 VAC or 220/230/240 VAC | | | | | |
| Voltage range | 67V-137 VAC/135V-275 VAC | | | | | |
| Frequency | 60/50 Hz(Auto sensing) | | | | | |
| Output | | | | | | |
| Voltage | 110/120 VAC or 220/230/240 VAC | | | | | |
| Voltage range(Battery mode) | ± 10% | | | | | |
| Frequency range(Battery mode) | 50 HZ or 60 Hz ± 10% | | | | | |
| Transfer time | Typical 4-6 ms | | | | | |
| Wave form(Battery mode) | Simulated sine wave | | | | | |
| BATTERY | | | | | | |
| Battery model & Quantity | 12V/7AH x 1 | 12V/9AH x 1 | 12V/7AH x 2 | 12V/9AH x 2 | 12V/7AH x 4 | 12V/9AH x 4 |
| Charge time | 8 hours recover to 80%-90% capacity | | | | | |
| PROTECTION | | | | | | |
| Full protection | Automatic detection, discharge, short circuit and overload protection | | | | | |
| INDICATORS | | | | | | |
| LCD display | AC Mode, Battery Mode, Load Level, Battery Level, Input Voltage, Output Voltage, Overload, and Low Battery | | | | | |
| ALARM | | | | | | |
| Battery mode | Sounding every 4 seconds | | | | | |
| Low battery | Sounding every second | | | | | |
| Overload | Sounding every second | | | | | |
| Fault | Continuously sounding | | | | | |
| ENVIRONMENT | | | | | | |
| Humidity | 0-90% RH @ 0-40 °C (Non-condensing) | | | | | |
| Noise Level | Less than 40dB | | | | | |
| INTERFACE | | | | | | |
| USB/R232 Port (Optional) | Support Windows XP/Vista, Windows 7/8, Linux, Unix, and MAC | | | | | |

Product specifications are subject to change without further notice



Products Description

- Compact size
- Intelligent CPU control
- Boost and buck AVR for voltage stabilization
- Off-mode charging
- Cold start function
- Auto restart while AC is recovering
- RS232/USB port optional
- Personal Computer
- Printer
- POS (Point of sales) Terminals
- Security System
- Fax Machine
- Modem, Router

Technical parameters

| SPECIFICATIONS | JLI-500 | JLI-600 | JLI-800 | JLI-1000 | JLI-1200 | JLI-1500 | JLI-2000 | JLI-3000 |
|-----------------------------------|---|---------------|-------------|---------------|---------------|-------------|---------------|--------------|
| Capacity | 500VA/300W | 600VA/360W | 800VA/480W | 1000VA/600W | 1200VA/720W | 1500VA/900W | 2000VA/1200W | 3000VA/1800W |
| Input | | | | | | | | |
| Nominal Voltage | 110/120VAC or 220/230/240VAC | | | | | | | |
| Voltage Range | 81-145VAC or 145-275VAC | | | | | | | |
| Frequency | 50Hz or 60Hz(auto-sensing) | | | | | | | |
| Output | | | | | | | | |
| Output Voltage | 110/120 VAC or 220/230/240 VAC | | | | | | | |
| AC Voltage Regulation(Batt. Mode) | ± 10% | | | | | | | |
| Frequency Range(Batt. Mode) | 50 HZ or 60 Hz ± 10% | | | | | | | |
| Transfer Time | Typical 6-10 ms | | | | | | | |
| Waveform(Batt. Mode) | Simulated sine wave | | | | | | | |
| BATTERY | | | | | | | | |
| Battery Type & Numbe | 12V/4AH x 1 | 12V/7.5AH x 1 | 12V/9AH x 1 | 12V/7.5AH x 2 | 12V/7.5AH x 2 | 12V/9AH x 2 | 12V/7.5AH x 4 | 12V9AH x 4 |
| Typical Recharge Time | 8 hours recover to 90% capacity | | | | | | | |
| PROTECTION | | | | | | | | |
| Full Protection | Short Circuit,Over load, Battery Low Voltage protection and off-mode charging | | | | | | | |
| RS232 or USB communication port | Optional | | | | | | | |
| RJ11/RJ45 port | Optional | | | | | | | |
| INDICATORS | | | | | | | | |
| Line Mode | Green lighting | | | | | | | |
| Battery Mode | Red lighting | | | | | | | |
| Battery Charge Mode | Yellow lighting | | | | | | | |
| ALARM | | | | | | | | |
| Battery Mode | Sounding every 4 seconds | | | | | | | |
| Low Battery | Sounding every second | | | | | | | |
| Overload | Sounding every 0.5 second | | | | | | | |
| Fault | Continuously sounding | | | | | | | |
| ENVIRONMENT | | | | | | | | |
| Humidity | 0-90% RH @ 0-40 °C (Non-condensing) | | | | | | | |
| Noise Level | Less than 40dB | | | | | | | |

Product specifications are subject to change without further notice

Functions

- Intelligent CPU control
- Auto restart while AC is recovering
- Boost and buck AVR for voltage stabilization
- Cold start function
- Off-mode charging
- Optional USB or RS-232 communication port, RJ-45 and SNMP
- Offering LED and LCD panels for selection

Applications

- Personal Computer
- Printer
- POS(Point of sales)Terminals
- Security System
- Fax Machine
- Modem, Router

Technical specification

| MODEL | D-500 | D-650 | D-800 | D-1000 | D-1500 | D-2000 | D-2000B | D-3000 |
|-------------------------------|---|-------------|-------------|-------------|-------------|--------------|--------------|--------------|
| Capacity | 500VA/300W | 650VA/390W | 800VA/480W | 1000VA/600W | 1500VA/900W | 2000VA/1200W | 2000VA/1200W | 3000VA/1800W |
| INPUT | | | | | | | | |
| Voltage | 110V/120 VAC or 220/230/240 VAC | | | | | | | |
| Voltage range | 81-145VAC or 145-275VAC | | | | | | | |
| Frequency | 60/50 Hz(Auto sensing) | | | | | | | |
| OUTPUT | | | | | | | | |
| Voltage | 110/120 VAC or 220/230/240 VAC | | | | | | | |
| Voltage range | ± 10% | | | | | | | |
| Frequency range(battery mode) | 60/50 ± 1 Hz | | | | | | | |
| Transfer time | 4-6ms | | | | | | | |
| Wave form(battery mode) | Simulated sine wave | | | | | | | |
| BATTERY | | | | | | | | |
| Battery model & Quantity | 12V/4.5AHx1 | 12V/7AHx1 | 12V/9AHx1 | 12V/7AHx2 | 12V/9AHx2 | 12V/9AHx2 | 12V/7AHx4 | 12V/9AHx4 |
| Charge time | 8 hours recover to 90% capacity | | | | | | | |
| PROTECTION | | | | | | | | |
| Full protection | Discharge, Short circuit and overload protection | | | | | | | |
| INDICATORS | | | | | | | | |
| LCD display | AC mode, Battery mode, Load level, Battery level, Input voltage, Output voltage, Overload and low battery | | | | | | | |
| ALARM | | | | | | | | |
| Battery mode | Sounding every 4 seconds | | | | | | | |
| Low battery | Sounding every second | | | | | | | |
| Overload | Sounding every second | | | | | | | |
| Fault | Continuously sounding | | | | | | | |
| INTERFACE | | | | | | | | |
| USB/R232 Port (Optional) | Support windows XP/Vista, Windows 7/8, Linux, Unix, and MAC | | | | | | | |
| Optional SNMP | Power management from SNMP management and web browser | | | | | | | |
| ENVIRONMENT | | | | | | | | |
| Humidity | 0-90% RH @ 0-40°C (Non-condensing) | | | | | | | |
| Noise level | Less than 40dB | | | | | | | |
| Dimension(mm) | 280x90x140 | 330x100x150 | 330x100x150 | 365x140x165 | 365x140x165 | 365x140x165 | 395x145x210 | 395x145x210 |
| N.W.(kg) | 4.0 | 5.2 | 5.7 | 10 | 11.9 | 12.6 | 17 | 21 |

Product specifications are subject to change without prior notice.



Functions

Intelligent CPU control
Auto restart while AC is recovering
Boost and buck AVR for voltage stabilization
Cold start function
Off-mode charging
Optional USB or RS-232 communication port, RJ-45 and SNMP

Applications

Personal Computer
Printer
POS(Point of sales)Terminals
Security System
Fax Machine
Modem, Router

Technical specification

| MODEL | S-500 | S-650 | S-800 | S-1000 | S-1500 | S-2000 | S-2000B | S-3000 |
|-------------------------------|---|------------|-------------|-------------|-------------|--------------|--------------|--------------|
| Capacity | 500VA/300W | 650VA/390W | 800VA/480W | 1000VA/600W | 1500VA/900W | 2000VA/1200W | 2000VA/1200W | 3000VA/1800W |
| INPUT | | | | | | | | |
| Voltage | 110V/120 VAC or 220/230/240 VAC | | | | | | | |
| Voltage range | 81-145VAC or 145-275VAC | | | | | | | |
| Frequency | 60/50 Hz(Auto sensing) | | | | | | | |
| OUTPUT | | | | | | | | |
| Voltage | 110/120 VAC or 220/230/240 VAC | | | | | | | |
| Voltage range | ± 10% | | | | | | | |
| Frequency range(battery mode) | 60/50 ± 1 Hz | | | | | | | |
| Transfer time | 4-6ms | | | | | | | |
| Wave form(battery mode) | Simulated sine wave | | | | | | | |
| BATTERY | | | | | | | | |
| Battery model & Quantity | 12V/4.5AHx1 | 12V/7AHx1 | 12V/9AHx1 | 12V/7AHx2 | 12V/9AHx2 | 12V/9AHx2 | 12V/7AHx4 | 12V/9AHx4 |
| Charge time | 8 hours recover to 90% capacity | | | | | | | |
| PROTECTION | | | | | | | | |
| Full protection | Discharge, Short circuit and overload protection | | | | | | | |
| INDICATORS | | | | | | | | |
| LCD display | AC mode, Battery mode, Load level, Battery level, Input voltage, Output voltage, Overload and low battery | | | | | | | |
| ALARM | | | | | | | | |
| Battery mode | Sounding every 4 seconds | | | | | | | |
| Low battery | Sounding every second | | | | | | | |
| Overload | Sounding every second | | | | | | | |
| Fault | Continuously sounding | | | | | | | |
| INTERFACE | | | | | | | | |
| USB/R232 Port (Optional) | Support windows XP/Vista, Windows 7/8, Linux, Unix, and MAC | | | | | | | |
| Optional SNMP | Power management from SNMP management and web browser | | | | | | | |
| ENVIRONMENT | | | | | | | | |
| Humidity | 0-90% RH @ 0-40°C (Non-condensing) | | | | | | | |
| Noise level | Less than 40dB | | | | | | | |
| Dimension(mm) | 280x90x140 | 320x90x140 | 330x100x150 | 365x140x165 | 365x140x165 | 365x140x165 | 395x145x210 | 395x145x210 |
| N.W.(kg) | 4.0 | 5.2 | 5.7 | 10 | 11.9 | 12.6 | 17 | 21 |

Product specifications are subject to change without prior notice.



AU Series



AB Series



AH Series

Functions

Intelligent CPU control
Auto restart while AC is recovering
Boost and buck AVR for voltage stabilization
Cold start function
Off-mode charging
Optional USB or RS-232 communication port, RJ-45 and SNMP

Applications

Personal Computer
Printer
POS(Point of sales)Terminals
Security System
Fax Machine
Modem, Router

Technical specification

| MODEL | 500 | 600 | 800 | 1000 | 1200 | 1500 | 2000 | 2000B | 3000 |
|---|--|-------------|-------------|-------------|-------------|-------------|--------------|--------------|--------------|
| Capacity | 500VA/300W | 600VA/360W | 800VA/480W | 1000VA/600W | 1200VA/720W | 1500VA/900W | 2000VA/1200W | 2000VA/1200W | 3000VA/1800W |
| INPUT | | | | | | | | | |
| Voltage | 110V/120 VAC or 220/230/240 VAC | | | | | | | | |
| Voltage range | 81-145VAC or 145-275VAC | | | | | | | | |
| Frequency range | 60/50 Hz(Auto sensing) | | | | | | | | |
| OUTPUT | | | | | | | | | |
| Output Voltage | 110/120 VAC or 220/230/240 VAC | | | | | | | | |
| AC Voltage regulation | ± 10% | | | | | | | | |
| Frequency range(battery mode) | 60Hz or 50Hz ± 10% | | | | | | | | |
| Transfer time | Typical 6-10ms | | | | | | | | |
| Wave form(battery mode) | Simulated sine wave | | | | | | | | |
| BATTERY | | | | | | | | | |
| Battery model & Quantity | 12V/4.5AHx1 | 12V/7.5AHx1 | 12V/9AHx1 | 12V/7.5AHx2 | 12V/7.5AHx2 | 12V/9AHx2 | 12V/9AHx2 | 12V/7.5AHx4 | 12V/9AHx4 |
| Typical recharge time | 8 hours recover to 90% capacity | | | | | | | | |
| PROTECTION | | | | | | | | | |
| Full protection | Short circuit, Over load, Battery low voltage protection | | | | | | | | |
| RS232 or USB communication port or SNMP | Optional | | | | | | | | |
| RJ11/RJ45 port | Optional | | | | | | | | |
| INDICATORS | | | | | | | | | |
| Line mode | Green lighting | | | | | | | | |
| Battery mode | Red lighting | | | | | | | | |
| Battery charge mode | Yellow lighting | | | | | | | | |
| ALARM | | | | | | | | | |
| Battery mode | Sounding every 10 seconds | | | | | | | | |
| Low battery | Sounding every second | | | | | | | | |
| Overload | Sounding every 0.5 second | | | | | | | | |
| Fault | Continuously sounding | | | | | | | | |
| ENVIRONMENT | | | | | | | | | |
| Humidity | 0-90% RH @ 0-40°C (Non-condensing) | | | | | | | | |
| Noise level | Less than 45dB | | | | | | | | |
| Dimension(mm) | 280x90x140 | 320x90x140 | 330x100x150 | 365x140x165 | 365x140x165 | 365x140x165 | 365x140x165 | 395x145x210 | 395x145x210 |
| N.W.(kg) | 4.0 | 5.2 | 5.7 | 10 | 10.5 | 11.9 | 12.3 | 17 | 21 |

Product specifications are subject to change without prior notice.



Functions

- Compact size
- Intelligent CPU control
- Auto restart while AC is recovering
- Boost and buck AVR for voltage stabilization
- Cold start function
- Off-mode charging
- Optional USB or RS232 communication port or SNMP
- Offering LED and LCD panels for selection

Applications

- Personal Computer
- Printer
- POS(Point of sales)Terminals
- Security System
- Fax Machine
- Modem, Router

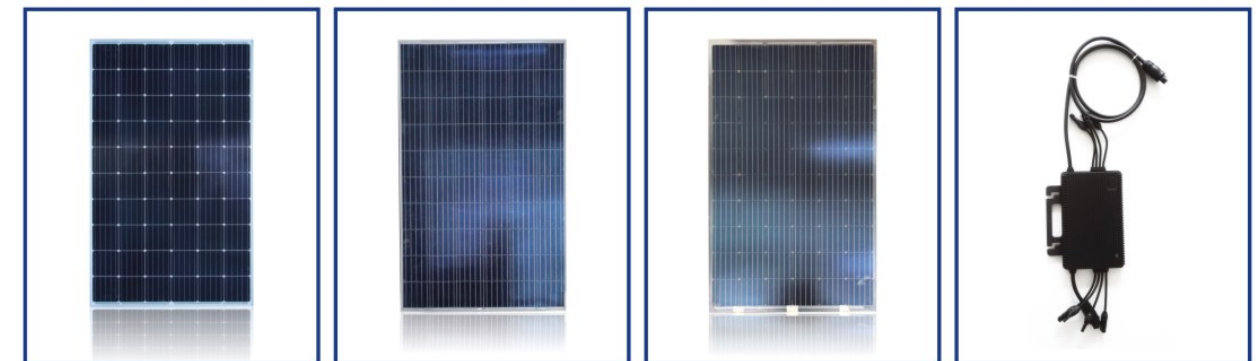
Technical specification

| MODEL | AL-500 | AL-1000 | AL-2000 |
|--|--|------------------|------------------|
| Capacity | 500VA/300W | 1000VA/600W | 2000VA/1200W |
| INPUT | | | |
| Voltage | 220/230 VAC | | |
| Voltage range | 145-275VAC | | |
| Frequency range | 60/50 Hz(Auto sensing) | | |
| OUTPUT | | | |
| Output Voltage | 220/230 VAC | | |
| AC Voltage regulation | ± 10% | | |
| Frequency range(battery mode) | 60Hz or 50Hz ± 10% | | |
| Transfer time | Typical 6-10ms | | |
| Wave form(battery mode) | Simulated sine wave | | |
| BATTERY | | | |
| Battery Voltage | 12 VDC | 24 VDC | 24 VDC |
| Float Voltage | 13.7 VDC ± 0.5 VDC | 27.4 VDC ± 1 VDC | 27.4 VDC ± 1 VDC |
| Charge current(Max.) | 5A | 5A | 5A |
| PROTECTION | | | |
| Full protection | Short circuit, Over load, Battery low voltage protection | | |
| Optional USB or RS232 communication port or SNMP | Optional | | |
| RJ11/RJ45 port | Optional | | |
| INDICATORS | | | |
| Line mode | Green lighting | | |
| Battery mode | Red lighting | | |
| Battery charge mode | Yellow lighting | | |
| ALARM | | | |
| Battery mode | Sounding every 10 seconds | | |
| Low battery | Sounding every second | | |
| Overload | Sounding every 0.5 second | | |
| Fault | Continuously sounding | | |
| ENVIRONMENT | | | |
| Humidity | 0-90% RH @ 0-40°C (Non-condensing) | | |
| Noise level | Less than 45dB | | |
| Dimension(mm) | 330x100x150 | 365x140x165 | 395x145x210 |
| N.W.(kg) | 3.5 | 7 | 8.5 |

Product specifications are subject to change without prior notice.

Production Scope

Our company now mainly in the line of producing mono and poly solar panels, double-glasses solar panel, on-grid and off-grid solar power systems, lithium battery and so on;



Mono Solar Panel

Poly Solar Panel

Double Glasses Mono Solar Panel

Micro inverter system

Common use mono and poly solar panels



1. It has big difference between mono and poly solar cell, easy to distinguish, the color is black and dark for mono series while it is blue color for poly kind;
2. There is no difference between mono and poly solar cell in use, both can guarantee 25 years' lifespan, but on the other hand, the mono cells have much higher efficiency than poly cells;
3. Due to the reason of saving electricity while producing poly cells, while it is also easier craft, so the cost of poly cell is lower than mono series.

JSM-60 (285-320W)

Mono crystal Solar Photovoltaic modules

Production Features

- Component efficiency as high as 19.67%
- Excellent low light power generation performance (morning, evening, rainy day)
- Strong compressive resistance, can withstand wind pressure of 2400Pa and snow pressure of 5400Pa
- IP67 junction box
- Advanced junction box ensures convenient installation of low resistivity connectors to ensure maximum output power



System Certification

ISO9001:2008ISO quality management system
ISO14001:2004 environmental management system

Product Certification

IEC61215, IEC61730

25 years* Linear power warranty **10** years* Product materials and process quality assurance

| | | | | | | | |
|-----------------------|--------------------|--------|--------|--------|--------|--------|--------|
| Parameters | 285W | 290W | 295W | 300W | 310W | 315W | 320W |
| Working Voltage | 30V | | | | | | |
| Working Current | 9.5A | 9.67A | 9.83A | 10A | 10.33A | 10.5A | 10.67A |
| Open-Circuit Voltage | 36V | | | | | | |
| Short-Circuit Current | 11.05A | 11.24A | 11.43A | 11.63A | 12.01A | 12.21A | 12.40A |
| Weight | 18.8KGS | | | | | | |
| Dimension | 1640*992*40 (35mm) | | | | | | |

JSM-72 (350-380W)

Mono crystal Solar Photovoltaic modules

Production Features

- Component efficiency as high as 19.67%
- Excellent low light power generation performance (morning, evening, rainy day)
- Strong compressive resistance, can withstand wind pressure of 2400Pa and snow pressure of 5400Pa
- IP67 junction box
- Advanced junction box ensures convenient installation of low resistivity connectors to ensure maximum output power



System Certification

ISO9001:2008ISO quality management system
ISO14001:2004 environmental management system

Product Certification

IEC61215, IEC61730

25 years* Linear power warranty **10** years* Product materials and process quality assurance

| | | | | | | | |
|-----------------------|-------------|--------|--------|--------|--------|--------|--------|
| Parameters | 350W | 355W | 360W | 365W | 370W | 375W | 380W |
| Working Voltage | 36V | | | | | | |
| Working Current | 9.72A | 9.86A | 10A | 10.14A | 10.28A | 10.42A | 10.56A |
| Open-Circuit Voltage | 44.2V | | | | | | |
| Short-Circuit Current | 11.36A | 11.53A | 11.69A | 11.85A | 12.01A | 12.18A | 12.34A |
| Weight | 21.6KGS | | | | | | |
| Dimension | 1956*992*40 | | | | | | |

JSP-60 (270-295W)

Poly crystal Solar Photovoltaic modules

Production Features

- Component efficiency as high as 17.82%
- Excellent low light power generation performance (morning, evening, rainy day)
- Strong compressive resistance, can withstand wind pressure of 2400Pa and snow pressure of 5400Pa
- IP67 junction box
- Advanced junction box ensures convenient installation of low resistivity connectors to ensure maximum output power



System Certification

ISO9001:2008ISO quality management system
ISO14001:2004 environmental management system

Product Certification

IEC61215, IEC61730

25 years* Linear power warranty **10** years* Product materials and process quality assurance

| | | | | | | |
|-----------------------|-------------------|--------|--------|--------|--------|--------|
| Parameters | 270W | 275W | 280W | 285W | 290W | 295W |
| Working Voltage | 30V | | | | | |
| Working Current | 9A | 9.17A | 9.33A | 9.5A | 9.67A | 9.83A |
| Open-Circuit Voltage | 36V | | | | | |
| Short-Circuit Current | 10.47A | 10.66A | 10.85A | 11.05A | 11.24A | 11.43A |
| Weight | 18.8KGS | | | | | |
| Dimension | 1640*992*40(35mm) | | | | | |

JSP-72 (325-355W)

Poly crystal Solar Photovoltaic modules

Production Features

- Component efficiency as high as 17.82%
- Excellent low light power generation performance (morning, evening, rainy day)
- Strong compressive resistance, can withstand wind pressure of 2400Pa and snow pressure of 5400Pa
- IP67 junction box
- Advanced junction box ensures convenient installation of low resistivity connectors to ensure maximum output power



System Certification

ISO9001:2008ISO quality management system
ISO14001:2004 environmental management system

Product Certification

IEC61215, IEC61730

25 years* Linear power warranty **10** years* Product materials and process quality assurance

| | | | | | | | |
|-----------------------|-------------|--------|--------|--------|--------|--------|--------|
| Parameters | 325W | 330W | 335W | 340W | 345W | 350W | 355W |
| Working Voltage | 36V | | | | | | |
| Working Current | 9.03A | 9.17A | 9.31A | 9.44A | 9.58A | 9.72A | 9.86A |
| Open-Circuit Voltage | 44.2V | | | | | | |
| Short-Circuit Current | 10.55A | 10.71A | 10.88A | 11.04A | 11.20A | 11.36A | 11.53A |
| Weight | 21.6KGS | | | | | | |
| Dimension | 1956*992*40 | | | | | | |

Reference On-Grid Solar Power System Projections



Solar Street Light



Green, Energy Saving, High Efficiency.

| Type | JS-001 |
|--------------------|---|
| Solar Panel | 5V/20W Poly Solar Panel; Lifespan: 25 Years |
| Battery | 3.2V/20AH LFPB, lifespan:8-12 Years |
| Luminous | 12W High Efficiency LED; Lifespan: 50000 Hours |
| Arm | Aluminum-magnesium Alloy |
| Control Mode | Light-operated Switch, intelligent power control |
| Lighting Time | Light for whole night, previous 4 hours high light, and then intelligent power control |
| Warranty | Whole Parts for 5 Years' warranty; (Replace new production once quality problem happens) |
| Height | 3-5m |
| Installation Place | Country road, building area, factory, school, garden, hospital and places with no power or less power |

| Type | JS-002 |
|--------------------|---|
| Solar Panel | 5V/40W Poly Solar Panel; Lifespan: 25 Years |
| Battery | 3.2V/30AH LFPB, lifespan:8-12 Years |
| Luminous | 28W High Efficiency LED; Lifespan: 50000 Hours |
| Arm | Aluminum-magnesium Alloy |
| Control Mode | Light-operated Switch, intelligent power control |
| Lighting Time | Light for whole night, previous 4 hours high light, and then intelligent power control |
| Warranty | Whole Parts for 5 Years' warranty; (Replace new production once quality problem happens) |
| Height | 4-6m |
| Installation Place | Country road, building area, factory, school, garden, hospital and places with no power or less power |

| Type | JS-003 |
|--------------------|---|
| Solar Panel | 5V/40W Poly Solar Panel; Lifespan: 25 Years |
| Battery | 3.2V/30AH LFPB, lifespan:8-12 Years |
| Luminous | 20W High Efficiency LED; Lifespan: 50000 Hours |
| Arm | Aluminum-magnesium Alloy |
| Control Mode | Light-operated Switch, intelligent power control |
| Lighting Time | Light for whole night, previous 4 hours high light, and then intelligent power control |
| Warranty | Whole Parts for 5 Years' warranty; (Replace new production once quality problem happens) |
| Height | 4-6m |
| Installation Place | Country road, building area, factory, school, garden, hospital and places with no power or less power |

| Type | JS-004 |
|--------------------|---|
| Solar Panel | 5V/15W Poly Solar Panel; Lifespan: 25 Years |
| Battery | 3.2V/20AH LFPB, lifespan:8-12 Years |
| Luminous | 18W High Efficiency LED; Lifespan: 50000 Hours |
| Arm | Aluminum-magnesium Alloy |
| Control Mode | Light-operated Switch, intelligent power control |
| Lighting Time | Light for whole night, previous 4 hours high light, and then intelligent power control |
| Warranty | Whole Parts for 5 Years' warranty; (Replace new production once quality problem happens) |
| Height | 3-5m |
| Installation Place | Country road, building area, factory, school, garden, hospital and places with no power or less power |

| Type | JS-005 |
|--------------------|---|
| Solar Panel | 5V/20W Poly Solar Panel; Lifespan: 25 Years |
| Battery | 3.2V/25AH LFPB, lifespan:8-12 Years |
| Luminous | 35W High Efficiency LED; Lifespan: 50000 Hours |
| Arm | Aluminum-magnesium Alloy |
| Control Mode | Light-operated Switch, intelligent power control |
| Lighting Time | Light for whole night, previous 4 hours high light, and then intelligent power control |
| Warranty | Whole Parts for 5 Years' warranty; (Replace new production once quality problem happens) |
| Height | 4-6m |
| Installation Place | Country road, building area, factory, school, garden, hospital and places with no power or less power |



385*135*65mm

| Type | JS-008 |
|--------------------|---|
| Solar Panel | 5V/7W Poly Solar Panel; Lifespan: 25 Years |
| Battery | 3.2V/15AH LFPB, lifespan:8-12 Years |
| Luminous | 160lm/W; Lifespan: 50000 Hours |
| Arm | Aluminum-magnesium Alloy |
| Control Mode | Light-operated Switch, intelligent power control |
| Lighting Time | Light for whole night, previous 4 hours high light, and then intelligent power control |
| Warranty | Whole Parts for 5 Years' warranty; (Replace new production once quality problem happens) |
| Height | 3-5m |
| Installation Place | Country road, building area, factory, school, garden, hospital and places with no power or less power |



390*200*54mm

| Type | JS-006 |
|--------------------|---|
| Solar Panel | 5V/30W Poly Solar Panel; Lifespan: 25 Years |
| Battery | 3.2V/30AH LFPB, lifespan:8-12 Years |
| Luminous | 50W High Efficiency LED; Lifespan: 50000 Hours |
| Arm | Aluminum-magnesium Alloy |
| Control Mode | Light-operated Switch, intelligent power control |
| Lighting Time | Light for whole night, previous 4 hours high light, and then intelligent power control |
| Warranty | Whole Parts for 5 Years' warranty; (Replace new production once quality problem happens) |
| Height | 4-6m |
| Installation Place | Country road, building area, factory, school, garden, hospital and places with no power or less power |



495*210*70mm

| Type | JS-009 |
|--------------------|---|
| Solar Panel | 5V/9W Poly Solar Panel; Lifespan: 25 Years |
| Battery | 3.2V/20AH LFPB, lifespan:8-12 Years |
| Luminous | 160lm/W; Lifespan: 50000 Hours |
| Arm | Aluminum-magnesium Alloy |
| Control Mode | Light-operated Switch, intelligent power control |
| Lighting Time | Light for whole night, previous 4 hours high light, and then intelligent power control |
| Warranty | Whole Parts for 5 Years' warranty; (Replace new production once quality problem happens) |
| Height | 4-6m |
| Installation Place | Country road, building area, factory, school, garden, hospital and places with no power or less power |



500*230*54mm

| Type | JS-007 |
|--------------------|---|
| Solar Panel | 5V/50W Poly Solar Panel; Lifespan: 25 Years |
| Battery | 3.2V/60AH LFPB, lifespan:8-12 Years |
| Luminous | 80W High Efficiency LED; Lifespan: 50000 Hours |
| Arm | Aluminum-magnesium Alloy |
| Control Mode | Light-operated Switch, intelligent power control |
| Lighting Time | Light for whole night, previous 4 hours high light, and then intelligent power control |
| Warranty | Whole Parts for 5 Years' warranty; (Replace new production once quality problem happens) |
| Height | 6-8m |
| Installation Place | Country road, building area, factory, school, garden, hospital and places with no power or less power |



650*260*95mm

| Type | JS-010 |
|--------------------|---|
| Solar Panel | 5V/12W Poly Solar Panel; Lifespan: 25 Years |
| Battery | 3.2V/30AH LFPB, lifespan:8-12 Years |
| Luminous | 160lm/W; Lifespan: 50000 Hours |
| Arm | Aluminum-magnesium Alloy |
| Control Mode | Light-operated Switch, intelligent power control |
| Lighting Time | Light for whole night, previous 4 hours high light, and then intelligent power control |
| Warranty | Whole Parts for 5 Years' warranty; (Replace new production once quality problem happens) |
| Height | 4-6m |
| Installation Place | Country road, building area, factory, school, garden, hospital and places with no power or less power |



620*240*54mm

OFF GRID SOLAR ENERGY SYSTEM CONNECTION



SOLAR ENERGY CONNECTION



ON-GRID SOLAR POWER SYSTEM Take 10KW System for Example

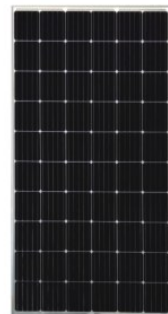


10KW Solar Power System

System Basic Information

Solar panel rated output power: 10KW
Power Generation: Average 50 KWH/Day

Solar Panel



JS280W-30V mono solar panel(poly option)
Size: 1640*992*40mm
Quantity: 36pcs
Vmp: 30V Voc:36V Imp: 9.33A
25 years lifespan(CE IEC)
Glass: 3.2mm
Junction box: IP67 with MC4 Connector
Efficiency performance: 25 Years 80%,
20 years 85%, 10 years 90%
2 Groups, each group with 18 Series

On-Grid Inverter



Inverter Power: 10KW*1pc
Efficiency: 97.2%
LCD display inverter
DC Input Voltage: 250VDC-960VDC

Panel Bracket



Slope Rooftop or flat rooftop
Wind load: 55m/s, snow load: 1.5kn/m2
Structure: Anodized,
Aluminum+stainless steel
Angel adjustable

Cables



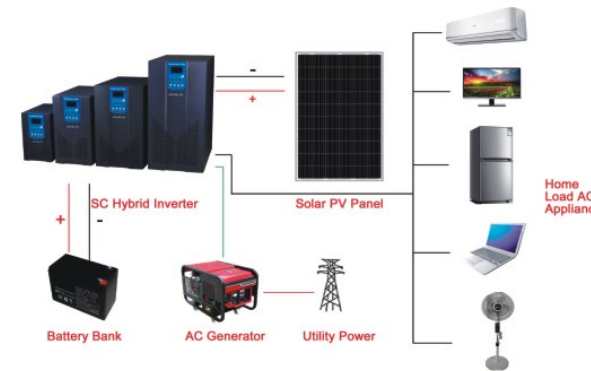
Combiner



Connector



OFF-GRID SOLAR POWER SYSTEM Take 15KW System for Example

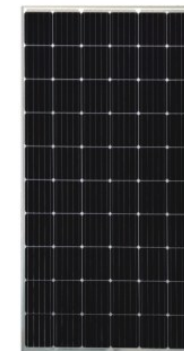


15KW Solar Power System

System Basic Information

Solar panel rated output power: 15KW
Suitable for daily power consumption: > 70 KWH
Allowable max. Loads power: 15KW(=21KVA)

Solar Panel



JS270W-30V mono solar panel(poly option)
Size: 1640*992*40mm
Quantity: 56pcs
Vmp: 30V Voc:36V Imp: 8.67A
25 years lifespan(CE IEC)
Glass: 3.2mm
Junction box: IP67 with MC4 Connector
Efficiency performance: 25 Years 80%,
20 years 85%, 10 years 90%
Connect Way: 8 Series & 7 Parallel

Hybrid of Solar Inverter



Inverter Power: 15KW/240VDC*1pc
MPPT Controller model: 240V/80A
Charging efficiency: 90%-95%
LCD display inverter and controller info
Built-in AC charger(automatically)
O/P: 110V, 220VAC and 5V/12VDC

Battery



Capacity: 12V/200AH*20pcs
Full sealed solar power gel battery
Warranty time: 5-6 Years
Connect way: 20 series & 1parallel

Panel Bracket



Slope Rooftop or flat rooftop
Wind load: 55m/s, snow load: 1.5kn/m2
Structure: Anodized,
Aluminum+stainless steel
Angel adjustable
(other type of rack can be customized as per client' s requirement)

Cables



Combiner



Connector



Mini Portable Solar Power System

JS-101

Reference Picture



Include:

- 1)10W solar panel*1 piece;
- 2)5W Led Bulb*2 Pieces;
- 3)Main Box(10AH Lithium Battery);
- 4)Charger & USB Cable;

JS-102

Reference Picture



Include:

- 1)20W solar panel*1 piece;
- 2)5W Led Bulb*2 Pieces;
- 3)Main Box(20AH Lithium Battery)
- 4)Charger & USB Cable;
- Radio&MP3&Bluetooth;

JS-103

Reference Picture



Include:

- 1) 5WLed;
- 2) 5W Solar Panel;
- 3) 5AH/3.7V Lithium Battery;

Integrated Off-Grid Solar Power System



| Type | JS-1KW | |
|-------------------------|---------------|------------|
| Specification | 1.Solar Panel | 300W*3P |
| | 2.Battery | 80AH/25.6V |
| | 3.Inverter | 1KW |
| (VDC25.6V-VAC110V/220V) | | |

| Type | JS-4KW | |
|-------------------------|---------------|-------------|
| Specification | 1.Solar Panel | 300W*14P |
| | 2.Battery | 600AH/25.6V |
| | 3.Inverter | 4KW |
| (VDC25.6V-VAC110V/220V) | | |

| Type | JS-2KW | |
|-------------------------|---------------|-------------|
| Specification | 1.Solar Panel | 300W*5P |
| | 2.Battery | 200AH/25.6V |
| | 3.Inverter | 2KW |
| (VDC25.6V-VAC110V/220V) | | |

| Type | JS-5KW | |
|-------------------------|---------------|-------------|
| Specification | 1.Solar Panel | 300W*17P |
| | 2.Battery | 800AH/25.6V |
| | 3.Inverter | 5KW |
| (VDC25.6V-VAC110V/220V) | | |

| Type | JS-3KW | |
|-------------------------|---------------|-------------|
| Specification | 1.Solar Panel | 300W*10P |
| | 2.Battery | 400AH/25.6V |
| | 3.Inverter | 3KW |
| (VDC25.6V-VAC110V/220V) | | |

| Type | JS-6KW | |
|-------------------------|---------------|--------------|
| Specification | 1.Solar Panel | 300W*20P |
| | 2.Battery | 1000AH/25.6V |
| | 3.Inverter | 6KW |
| (VDC25.6V-VAC110V/220V) | | |

Mini HOME SOLAR POWER SYSTEM Catalogue



| Model (25.6V Series) | | JS-520W-25.6V |
|----------------------|----------------------|-----------------------|
| Solar Panel | Specifications | 260W 1640*992*40mm |
| | Quantity | (260W*2PCS) |
| | Power Generation/Day | 2.6KWH/Day |
| Battery Case | Lithium Battery | 100AH/25.6V*1PC |
| | Charge Controller | MPPT 20A/29.2V*2PC |

| Model (25.6V Series) | | JS-600W-25.6V |
|----------------------|----------------------|-----------------------|
| Solar Panel | Specifications | 300W 1956*992*40mm |
| | Quantity | (300W*2PCS) |
| | Power Generation/Day | 3.0KWH/Day |
| Battery Case | Lithium Battery | 150AH/25.6V*1PCS |
| | Charge Controller | MPPT 20A/29.2V*2PC |

| Model (25.6V Series) | | JS-1040W-25.6V |
|----------------------|----------------------|-----------------------|
| Solar Panel | Specifications | 260W 1640*992*40mm |
| | Quantity | (260W*4PCS) |
| | Power Generation/Day | 5.2KWH/Day |
| Battery Case | Lithium Battery | 200AH/25.6V*1PCS |
| | Charge Controller | MPPT 20A/29.2V*4PC |

| Model (25.6V Series) | | JS-1200W-25.6V |
|----------------------|----------------------|-----------------------|
| Solar Panel | Specifications | 300W 1956*992*40mm |
| | Quantity | (300W*4PCS) |
| | Power Generation/Day | 7.7KWH/Day |
| Battery Case | Lithium Battery | 300AH/25.6V*1PCS |
| | Charge Controller | MPPT 20A/29.2V*4PC |

| Model (12.8V Series) | | JS-100W-12.8V |
|----------------------|----------------------|-----------------------|
| Solar Panel | Specifications | 100W 1200*540*30mm |
| | Quantity | (100W*1PCS) |
| | Power Generation/Day | 0.50KWH/Day |
| Battery Case | Lithium Battery | 20AH/12.8V |
| | Charge Controller | MPPT 10A/12V |

| Model (12.8V Series) | | JS-150W-12.8V |
|----------------------|----------------------|-----------------------|
| Solar Panel | Specifications | 150W 1480*670*35mm |
| | Quantity | (150W*1PCS) |
| | Power Generation/Day | 0.75KWH/Day |
| Battery Case | Lithium Battery | 50AH/12.8V |
| | Charge Controller | MPPT 10A/12V |

| Model (12.8V Series) | | JS-200W-12.8V |
|----------------------|----------------------|-----------------------|
| Solar Panel | Specifications | 200W 1324*992*35mm |
| | Quantity | (200W*1PCS) |
| | Power Generation/Day | 1KWH/Day |
| Battery Case | Lithium Battery | 80AH/12.8V |
| | Charge Controller | MPPT 20A/12V |

| Model (12.8V Series) | | JS-300W-12.8V |
|----------------------|----------------------|-----------------------|
| Solar Panel | Specifications | 300W 1956*992*40mm |
| | Quantity | (300W*1PCS) |
| | Power Generation/Day | 1.5KWH/Day |
| Battery Case | Lithium Battery | 120AH/12.8V |
| | Charge Controller | MPPT 20A/12V |

| Model (12.8V Series) | | JS-520W-12.8V |
|----------------------|----------------------|-----------------------|
| Solar Panel | Specifications | 520W 1640*992*40mm |
| | Quantity | (260W*2PCS) |
| | Power Generation/Day | 2.6KWH/Day |
| Battery Case | Lithium Battery | 200AH/12.8V*1PCS |
| | Charge Controller | MPPT 30A/12V |

| Name of Load | Watt | Quantity | Power Consumption | Reference Picture |
|--------------------|----------|----------|-------------------|-------------------|
| LED light | 8W | 1 | 0.008KWH/Hour | |
| DC Fan | 15W | 1 | 0.015KWH/Hour | |
| DC TV 17 | 25W | 1 | 0.025KWH/Hour | |
| DC TV 22 | 30W | 1 | 0.03 KWH/Hour | |
| DC Refrigerator | 106L/50W | 1 | 0.05KWH/Hour | |
| | 138L/60W | 1 | 0.06KWH/Hour | |
| DC Air Conditioner | 735W | 1 | 0.735KWH/Hour | |
| | 1050W | 1 | 1.05 KWH/Hour | |
| DC Washing Machine | 200W | 1 | 0.2KWH/Hour | |
| DC Washing Machine | 180W | 1 | 0.18KWH/Hour | |
| DC Freezer | 128L/50W | 1 | 0.05KWH/Hour | |
| | 182L/80W | 1 | 0.08KWH/Hour | |

Solar Air Conditioner

| Reference Picture | Type | Specification |
|-------------------|----------|---|
| | 9000btu | 1.Air Conditioner: 1p 2.Battery: 200AH/25.6V 3.Solar: 1500W (300W*5PCS) |
| | 12000btu | 1.Air Conditioner: 1.5p 2.Battery: 200AH/25.6V 3.Solar: 3000W (300W*10PCS) |
| | 18000btu | 1.Air Conditioner: 2p 2.Battery: 400AH/25.6V 3.Solar: 3000W (300W*10PCS) |

Solar Window Air Conditioner

| Reference Picture | Type | Specification |
|-------------------|----------|--|
| | 9000btu | Air Conditioner: 1. Machine size: 45*35*55cm; 2. Control Mode: Single Cold; 3. Input Power: 850W; 4. Weight: 30KGS; 5. Application area: within 8-15 square meters; Battery Box: 1. Lithium Battery; 2. Capacity:200AH/25.6V*1set; Solar Panel: 1. Mono Series 300W Solar Panel; 2. Quantity: 5Pcs; |
| | 12000btu | Air Conditioner: 1. Machine size: 61.5*54*39cm; 2. Control Mode: Single Cold; 3. Input Power: 1465W; 4. Weight: 37KGS; 5. Application area: within 15-23 square meters; Battery Box: 1. Lithium Battery; 2. Capacity:200AH/25.6V*1set; Solar Panel: 1. Mono Series 300W Solar Panel; 2. Quantity: 10Pcs; |

Solar Freezer


| Reference Picture | Type | Specification |
|-------------------|-------------------|-----------------|
| | JS-186L | 1.Freezer: 186L |
| | | 2.Battery: 1KWH |
| | | 3.Solar: 280W |
| | JS-206L | 1.Freezer: 206L |
| 2.Battery: 1KWH | | |
| 3.Solar: 340W | | |
| JS-258L | 1.Freezer: 258L | |
| | 2.Battery: 1.5KWH | |
| | 3.Solar: 340W | |
| JS-288L | 1.Freezer: 288L | |
| | 2.Battery: 2KWH | |
| | 3.Solar: 540W | |


Solar Bulb

| <table border="1"> <thead> <tr> <th>Type</th> <th>JS-201</th> </tr> </thead> <tbody> <tr> <td>Include:</td> <td> 1)1.2W solar panel*1 piece; 2)3W Led Bulb*1 Pieces; 2.6AH/3.7V Lithium Battery; </td> </tr> </tbody> </table> | Type | JS-201 | Include: | 1)1.2W solar panel*1 piece; 2)3W Led Bulb*1 Pieces; 2.6AH/3.7V Lithium Battery; | <table border="1"> <thead> <tr> <th>Type</th> <th>JS-202</th> </tr> </thead> <tbody> <tr> <td>Include:</td> <td> 1)1.8W solar panel*1 piece; 2)5W Led Bulb*1 Pieces; 3.5AH Lithium Battery; </td> </tr> </tbody> </table> | Type | JS-202 | Include: | 1)1.8W solar panel*1 piece; 2)5W Led Bulb*1 Pieces; 3.5AH Lithium Battery; |
|--|---|--------|----------|---|---|------|--------|----------|--|
| Type | JS-201 | | | | | | | | |
| Include: | 1)1.2W solar panel*1 piece; 2)3W Led Bulb*1 Pieces; 2.6AH/3.7V Lithium Battery; | | | | | | | | |
| Type | JS-202 | | | | | | | | |
| Include: | 1)1.8W solar panel*1 piece; 2)5W Led Bulb*1 Pieces; 3.5AH Lithium Battery; | | | | | | | | |


Solar Flood Light



| JS-01 | Include | |
|---|--|-----------------------------|
|  | 1.25W Solar LED Flood Light (With Remote Controller) | |
| | 2.LED Lamp: | 5730 LED 59 PCS 3000K-6500K |
| | 3.Solar Panel: | 6V/10W Polycrystalline |
| | 4.Battery Type: | LiFePO4 3.2V/10AH |
| | 5.IP Rating: | IP65 |
| | 6.Charging time: | 6-8 Hours |
| | 7.Discharging time: | 8-10 Hours |
| | 8.Lumen: | 120 lm/w |
| | 9.Material: | Die-casting Aluminum |
| | 10.Lamp Size: | 170*150*50mm |
| | 11.Warranty: | 3 Years |

| JS-02 | Include | |
|---|--|-----------------------------|
|  | 1.40W Solar LED Flood Light (With Remote Controller) | |
| | 2.LED Lamp: | 5730 LED 79 PCS 3000K-6500K |
| | 3.Solar Panel: | 6V 15W Polycrystalline |
| | 4.Battery Type: | LiFePO4 3.2V/15AH |
| | 5.IP Rating: | IP65 |
| | 6.Charging time: | 6-8 Hours |
| | 7.Discharging time: | 8-10 Hours |
| | 8.Lumen: | 120 lm/w |
| | 9.Material: | Die-casting Aluminum |
| | 10.Lamp Size: | 215*190*70mm |
| | 11.Warranty: | 3 Years |

| JS-03 | Include | |
|--|--|------------------------------|
|  | 1.60W Solar LED Flood Light (With Remote Controller) | |
| | 2.LED Lamp: | 5730 LED 979 PCS 3000K-6500K |
| | 3.Solar Panel: | 6V 15W Polycrystalline |
| | 4.Battery Type: | LiFePO4 3.2V/40AH |
| | 5.IP Rating: | IP65 |
| | 6.Charging time: | 6-8 Hours |
| | 7.Discharging time: | 8-10 Hours |
| | 8.Lumen: | 120 lm/w |
| | 9.Material: | Die-casting Aluminum |
| | 10.Lamp Size: | 238*213*80mm |
| | 11.Warranty: | 3 Years |

| JS-04 | Include | |
|---|---|------------------------------|
|  | 1.100W Solar LED Flood Light (With Remote Controller) | |
| | 2.LED Lamp: | 5730 LED 979 PCS 3000K-6500K |
| | 3.Solar Panel: | 6V 15W Polycrystalline |
| | 4.Battery Type: | LiFePO4 3.2V/40AH |
| | 5.IP Rating: | IP65 |
| | 6.Charging time: | 6-8 Hours |
| | 7.Discharging time: | 8-10 Hours |
| | 8.Lumen: | 120 lm/w |
| | 9.Material: | Die-casting Aluminum |
| | 10.Lamp Size: | 285*250*90mm |
| | 11.Warranty: | 3 Years |



Products Description

- Aircraft signal
- Alarm and security system
- Electronic apparatus and equipment
- Communication power supply
- DC power supply
- Auto control system
- All purpose
- Uninterruptible Power Supply(UPS)
- Electric Power System(EPS)
- Emergency backup system
- Emergency light
- Railway Signal

Technical parameters

| Models | Nominal Voltage(V) | Capacity(Ah) | Dimensions(mm) | | | |
|----------|--------------------|--------------|----------------|-------|--------|--------------|
| | | | Length | Width | Height | Total Height |
| JS12-4 | 12 | 4/20HR | 90 | 70 | 101 | 107 |
| JS12-7 | 12 | 7.0/20HR | 151 | 65 | 94 | 100 |
| JS12-9 | 12 | 9.0/20HR | 151 | 65 | 94 | 100 |
| JS12-12 | 12 | 12/20HR | 151 | 98 | 94 | 100 |
| JS12-17 | 12 | 17/20HR | 181 | 77 | 167 | 167 |
| JS12-24 | 12 | 24/20HR | 174 | 165 | 125 | 125 |
| JS12-38 | 12 | 38/10HR | 197 | 166 | 174 | 181 |
| JS12-65 | 12 | 65/10HR | 350 | 166 | 179 | 179 |
| JS12-100 | 12 | 100/10HR | 331 | 173 | 213 | 218 |
| JS12-120 | 12 | 120/10HR | 407 | 174 | 209 | 233 |
| JS12-150 | 12 | 150/10HR | 484 | 170 | 240 | 240 |
| JS12-200 | 12 | 200/10HR | 522 | 240 | 216 | 240 |

Products Description

- Electric tools
- Vehicle in place of walking
- Lawn mowers
- Golf trolleys and golf cart
- Power system of special network or local area network
- Electric toys
- Railway and marine systems
- Fire alarms
- Solar and wind power system
- Electric wheelchairs
- Medical equipment

Technical parameters

| Models | Nominal Voltage(V) | Capacity(Ah) | Dimensions(mm) | | | |
|-----------|--------------------|--------------|----------------|-------|--------|--------------|
| | | | Length | Width | Height | Total Height |
| JSG12-38 | 12 | 38/20HR | 197 | 166 | 171 | 171 |
| JSG12-65 | 12 | 65/20HR | 350 | 166 | 179 | 179 |
| JSG12-100 | 12 | 100/20HR | 331 | 173 | 213 | 218 |
| JSG12-120 | 12 | 120/20HR | 407 | 174 | 209 | 233 |
| JSG12-150 | 12 | 150/20HR | 484 | 171 | 241 | 241 |
| JSG12-200 | 12 | 200/20HR | 522 | 240 | 220 | 244 |



Products Description

Product Name :MPPT solar charge controller
 Model No.: MPPT –20A/30A/40A/50A/60A/80A/100A/120A
 Classification: Solar charge controller
 Introduction :Mainly used for solar power station, home solar power system, solar street light control system, mobile solar system.

Technical Parameter Table

1. Advanced MPPT Technology, High converting efficiency higher than 99% for minimizing energy loss.
2. Intelligent LCD and LED display with multi-function.
3. Adopt advanced MCU microprocessor control technology.
4. Reversed current protection at night, over voltage and reverse polarity protection.
5. Capable to parallel in output, to expand capacity easily.
6. Capable of selecting different charging mode for various types of batteries.

Technical parameters

| Model No.: | MPPT 20A | MPPT 30A | MPPT 40A | MPPT 50A | MPPT 60A | MPPT 80A | MPPT 100A | MPPT 120A |
|---|--|----------|-------------|----------|----------|-------------|-----------|-----------|
| MPPT Range @ Operating Voltage | 12V System 18VDC ~ 80 VDC 24V System 30VDC ~ 100 VDC 36V System 40VDC ~ 100VDC 48V System 60VDC ~ 150 VDC 96V System 120VDC~200VDC | | | | | | | |
| Maximum PV Array Open Circuit Voltage | 12V/24V/36V/48V/96V 12V-48V(150v) 200VDC(96V) | | | | | | | |
| Maximum PV Array Power | 280W | 420W | 570W | 700W | 900W | 1140W | 1400W | 1800W |
| Connected Battery Type | 12V/24V/36V/48V/96V Sealed lead acid, Gel, Nicad battery (User customization) | | | | | | | |
| Rated current | 20A | 30A | 40A | 50A | 60A | 80A | 100A | 120A |
| Maximum Charging Current | 22A | 32A | 42A | 52A | 62A | 82A | 102A | 122A |
| Maximum Efficiency | 12V/24V/36V/48V/96V ≥99% | | | | | | | |
| Temperature compensation | 12V/24V/36V/48V/96V 1-3mV/°C | | | | | | | |
| Charging Method | 12V/24V/36V/48V/96V Three stages: constant current (MPPT), equalizing charge, floating charge | | | | | | | |
| High temperature protection | 90°C | | | | | | | |
| LCD Display | LCD panel indicating solar power, load level, battery voltage/capacity, charging current, and fault conditions | | | | | | | |
| LED Display | Charging indication, direct current output indication | | | | | | | |
| PC host computer (communication port) | Rs485 (optional) | | | | | | | |
| Humidity | 0 to 90%RH(No Dew) | | | | | | | |
| Operating Temperature | -20°C to 60°C | | | | | | | |
| Storage Temperature | -40°C to 70°C | | | | | | | |
| Altitude | 0 to 3500 m | | | | | | | |
| Product Size, L x W x H (mm) | 212x190x85 | | 313x230x91 | | | 380x358x140 | | |
| Carton Size, L x W x H (mm) | 315x235x150 | | 355x270x135 | | | 426x400x185 | | |
| Type of Mechanical Protection | IP32 | | | | | | | |

Product models and specifications are subject to change without prior notice.

